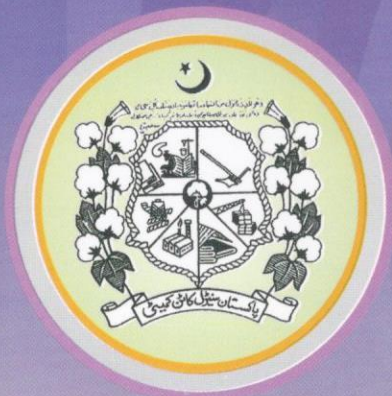


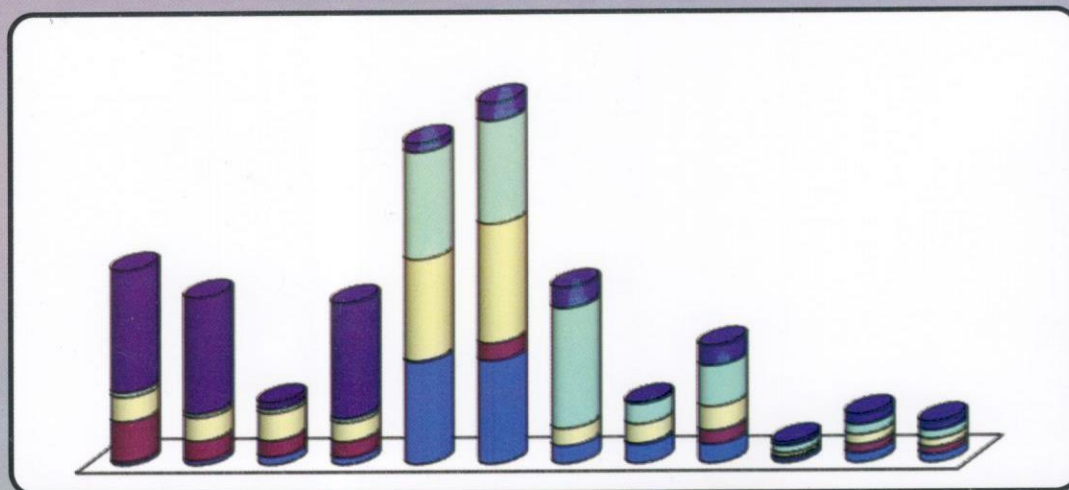
Special Edition for 75th Plenary Meeting of ICAC



October, 2016
Volume # 45

COTISTICS

Annual Cotton Statistical Bulletin



Directorate of Marketing & Economic Research

Pakistan Central Cotton Committee

Ministry of Textile Industry, Government of Pakistan

Old Shuja Abad Road, Multan Pakistan.

Phone: +92-61-9201657 Fax: +92-61-9201658

Web: www.pccc.gov.pk E-mail: dmer@pccc.gov.pk

Special Edition for 75th Plenary Meeting of ICAC

PAKISTAN CENTRAL COTTON COMMITTEE

WELCOMES

**THE DISTINGUISH DELEGATES OF
THE 75TH PLENARY MEETING OF ICAC**



(30TH OCTOBER 2016 – 4TH NOVEMBER 2016)

ISLAMABAD, PAKISTAN

COTISTICS (Vol. 45) Directorate of Marketing & Economic Research, PCCC Multan

**DIRECTORATE OF MARKETING & ECONOMIC RESEARCH
PAKISTAN CENTRAL COTTON COMMITTEE
MINISTRY OF TEXTILE INDUSTRY
GOVERNMENT OF PAKISTAN**



Editorial Team

01. **Dr. Muhammad Ali Talpur**
Director
02. **Mrs. Amra Nazim**
Principal Scientific Officer
03. **Mr. Gul Hassan Chandio**
Senior Scientific Officer
04. **Syed Kamal Ashraf**
Statistical Officer
05. **Mrs. Sabica Kulsoom**
Computer Operator





**Government of Pakistan
Ministry of Textile Industry**

Message

Pakistan is the fourth largest cotton producer, third largest consumer and second largest yarn exporter of the world. Cotton and textiles exports are backbone of the economy of Pakistan. Being cotton based economy, Pakistan aims to elevate its share in 600 billion US\$ value added global market, and is under inescapable obligation to re-orient its market strategy to provide competitive edge to its textile sector.

2. Dissemination of statistics in the above aspect is indeed a remarkable assignment that Directorate of Marketing & Economic Research of Pakistan Central Cotton Committee has been doing through its various publications. The Directorate of Marketing & Economic Research, makes availability of data and facts on all aspects of cotton and keeps update to the stakeholders in the country.
3. Collection of statistics is a scientific process whereas, presenting that data according to user's choice and need is an art, which needs special training and skills. Looking at the "COTISTICS" it seems that Directorate of Marketing & Economic Research of Pakistan Central Cotton Committee is blessed by that art. Dissemination of cotton data is of prime importance for policy formulators.
4. I am hopeful that this publication contains valuable information that can be utilized for academic, research, policy input quality/standards, decision making, investment and trade at local and global level.

(Hassan Iqbal)

Secretary



Message

Statistics play pivotal role in decision making, effective planning, price determination and maintaining of strategic stocks. Collection of authentic data and dissemination in universally acceptable form in due course of time has always been a challenge. Collection of cotton related statistics is even more challenging task considering the diversity, complexity of cotton value chain and number of actors involved in its value chain. Pakistan Central Cotton Committee has been assigned the task of collection and dissemination of facts and figures regarding cotton production, utilization and market dynamics through its various periodical publications. Directorate of Marketing & Economic Research, an important component of PCCC is doing this job very efficiently, despite of limitations in human and other resources. The stakeholders' confidence on publications of this Directorate shows the information is reliable and timely available for policy makers, researchers and academia for better utilization.

COTISTICS, an Annual Cotton Statistical Bulletin is one of the key publications which covers cotton related national and international statistics, and this publication is used as reference data book. The Directorate of Marketing & Economic Research of PCCC has made the data handy available at www.pccc.gov.pk for the convenience of researchers.

The special edition of COTISTICS is designed for the 75th Plenary Meeting of ICAC, Islamabad, Pakistan, with improved tables and charts.

Minds and fingers behind COTISTICS deserves a special applaud for their un-interrupted publication for 44 years and determination to continue catering its stakeholders, through its valuable publications.

(Dr. Khalid Abdullah)

Vice-President, PCCC



Foreword

Availability of accurate data and facts on cotton are pre-requisite for identifying main areas of research, determination of priorities and formulation of some research and extension programs. Being an important function of PCCC, the Directorate of Marketing & Economic Research has since its inception, accorded high priority on collection and compilation of data over the years and has increased the reliance of other organizations upon PCCC for regularly providing substantial information on all aspects of cotton production, marketing & trade. The Directorate of Marketing & Economic Research has been disseminating cotton statistics to the stakeholders through its regular publications. This imperatively needs disseminating the required information to all concerned in the form of a statistical bulletin namely "COTISTICS" which since its first appearance in 1971 has been rendering useful service and has earned commendation from public and private sector organizations.

"COTISTICS" is published annually and the coverage in this bulletin has expanded steadily. The main items include cotton area, production, yield, exports, imports, ginning, pressing, stocks, cotton products, prices and international statistics. The data in the tables are expressed in both English and Metric Systems and all time series are for the cotton season i.e. September to August, unless otherwise specified.

The Pakistan Central Cotton Committee is grateful to all Government, Semi-Government and Private Organizations and specially to the Federal Ministry of Textile Industry, Provincial Agriculture Departments, Pakistan Bureau of Statistics, Textile Commissioner's Organization, Karachi cotton association, Pakistan cotton ginners association, all Pakistan yarn merchants association, Karachi Grain and Seed Merchants' Group of various Market Committees for their help and support without which this publication would not have been possible.

The officers/staff of the Directorate of Marketing & Economic Research have been working very hard to accomplish this task. Their work is highly appreciable.

Dr Muhammad Ali Talpur

Director

Directorate of Marketing & Economic Research

Pakistan central cotton Committee, Multan

Special Edition for 75th Plenary Meeting of ICAC

Contents

	Table #	Page #
History of Cotton Production		1
Cotton Research Setup in Pakistan		3
History of Cotton Varieties Evolved in Pakistan		4
Textile & Ginning Industry in Pakistan		7
Pakistan Central Cotton Committee		8
Varieties Developed & Varieties in Pipeline by PCCC		9
Pictures of Varieties Developed by CCRI, Multan & CCRI, Sakrand		11
PCCC's Focused Areas and Cotton R & D Framework		19
 COTTON STATISTICS OF PAKISTAN		
Cotton Area	1	20 - 21
Cotton Production	2	22 - 23
Cotton Yield	3	24 - 25
Cotton Seed Production	4	26 - 27
Seed Cotton Arrivals into Ginning Factories--- Province & District-wise	5	28
Raw Cotton Pressing by Ginning Factories--- Province & District-wise	6	29
Supply and Distribution Position of Cotton	7	30
Imports of Raw Cotton---Country-wise	8	31
Cotton Yarn Production and Disposal	9	32
Yarn Production---- (Count-wise)	10	33
Cloth Production --- Grade-wise	11	34
Cotton Textiles Statistics	12	35 - 36
Exports of Raw Cotton---Country-wise	13	37 - 38
Exports of Cotton Waste --- Country-wise	14	39 - 40
Exports of Cotton Yarn --- Country-wise	15	41 - 42
Exports of Cotton Cloth --- Country-wise	16	43 - 44
Imports of Synthetic Fibres and Yarns excluding Nylons--- Country-wise	17	45
Imports of Nylon Fibres and Yarns--- Country-wise	18	46
Yarn Production, Exports and Domestic Requirement	19	47
Seed Cotton & Raw Cotton (Lint) Market Prices during 2015-16 (Monthly Averages)	20 - 21	48
Seed Cotton Market Prices--- Seasonal Averages	22	49
KCA's EX-Gin Prices of Raw Cotton at Karachi during 2015-16 (Monthly Averages)	23	50
KCA's EX-Gin Prices of Raw Cotton at Karachi (Seasonal Averages)	24	51
Cotton Yarn Prices at Karachi during 2015-16 --- Count-wise (Monthly Averages)	25	52
Cotton Yarn Prices at Karachi--- Count-wise (Seasonal Averages)	26	53
Prices of Cotton Seed & Cotton Seed Cake during 2015-16 (Monthly Averages)	27 - 28	54
Exports of Cotton and Cotton Manufactures for July-June Period (2011-12 to 2015-16)	29	55
 WORLD COTTON STATISTICS		
Major Cotton Producing and Consuming Countries	30	56
World Cotton Statistics & World Cotton Distribution	31 - 32	57
Pakistan's Place in World Cotton Production, Consumption & Yield	33 - 35	58
Cotlook Indices at Liverpool	36	59
Top Five Producing Countries & their % Share & New York Cotton Futures	37 - 38	60

HISTORY OF COTTON PRODUCTION IN PAKISTAN

Pakistan is the ancient home of cultivated cotton, excavated at Moen-jo-Daro in Sindh, Pakistan. The first indication of cotton use was found in sub-continent and dates back to 6000 B.C. Fragments of cotton cloth were found in Indus valley, so it is generally perceived that cotton was first cultivated in the Indus delta and its type was Asiatic (Desi) popularly known as “*Gossypium arboreum*”. In 800 A.D Arab merchants brought cotton to Mesopotamia, Egypt and Europe. During 1500 A.D cotton fiber was generally known around the world.

Today, cotton is one of the valuable and extensively produced agricultural and industrial crop all over the world. It is being cultivated in more than 100 countries, covering around 2.5 percent arable land of the world. It is highest agricultural trading product and is being traded among more than 150 countries. More than 300 million families are engaged in cotton industry including secondary services like storage, transportation, ginning and baling.

Cotton being a cash crop is the mainstay of Pakistan’s economy. It contributes about 1.5% to GDP and 6.7% to total value addition in agriculture. Pakistan is the 4th largest cotton producer, 3rd largest consumer of cotton and 2nd largest exporter of cotton yarn in world. Cotton is sown on an area of around 3.0 million hectares by more than 1.4 million farmers. Punjab is the main cotton producing province and accounts for 80% of total cotton area and 73% of total cotton production. Whereas, Sindh represents about 20% of cotton area and about 28% of production. Cotton production supports Pakistan’s largest industrial sector, comprising some 450 textile mills, involving 40% of industrial labor.

COTTON GROWTH PATTERN IN PAKISTAN

Since independence of Pakistan in 1947, the production of cotton has risen steadily. The area increased from 1.23 million hectares in 1947 to 3.20 million hectares with concurrent production from 1.1 million bales to 13.95 million bales of 170 kg. This phenomenal growth in production is attributed to introduction of high yielding varieties having better fiber quality characteristics, heat tolerant, wider adaptability and introduction of improved cotton production technologies, across the cotton belt.

Figure I: GROWTH PATTERN OF COTTON AREA IN PAKISTAN

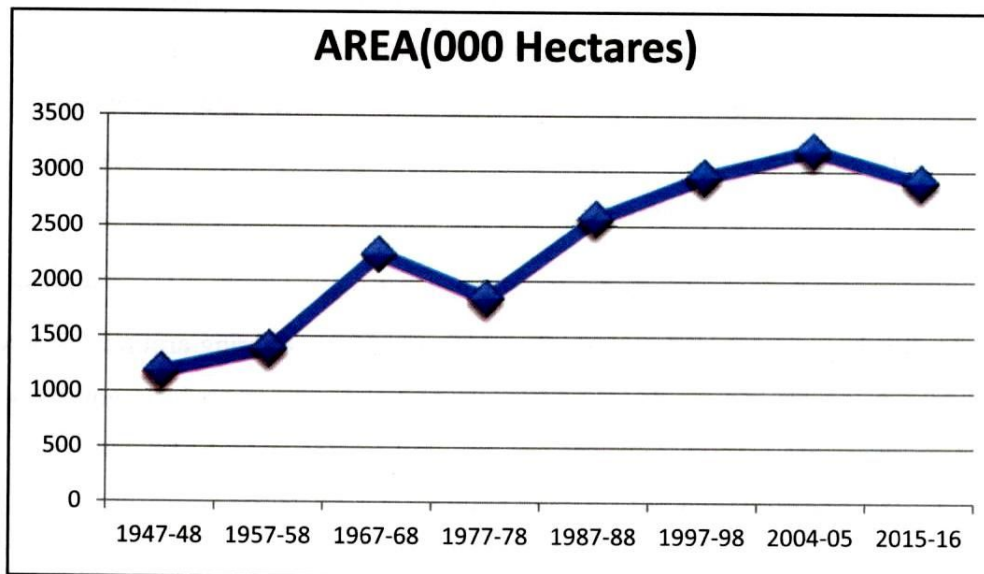
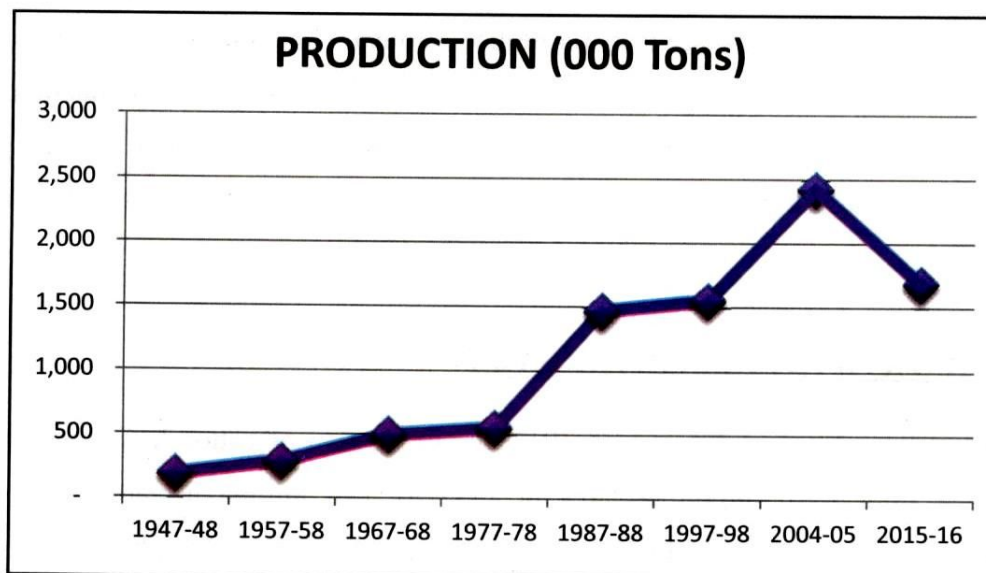


Figure II: COTTON PRODUCTION PATTERN IN PAKISTAN



Special Edition for 75th Plenary Meeting of ICAC

COTTON RESEARCH SETUP IN PAKISTAN

In Pakistan, research on cotton has been given prime importance and a number of organizations are conducting research on various aspects of cotton. Main organizations are:

- Pakistan Central Cotton Committee (PCCC).
- Centre of Excellence in Molecular Biology (CEMB) Punjab University Lahore.
- National Institute of Biotechnology & Genetic Engineering (NIBGE) Faisalabad.
- Nuclear Institute of Agriculture & Biology (NIAB), Pakistan Atomic Energy Commission, Faisalabad.
- Ayub Agricultural Research Institute, Faisalabad.
- Agricultural University Peshawar.
- Nuclear Institute of Agriculture (NIA) Tando Jam, Sindh.
- Department of Agriculture Research, Sindh.
- Sindh Agriculture University Tando Jam.
- Mohammad Nawaz Shareef University of Agriculture, Multan.
- Agriculture Policy Institute, Islamabad.
- Multinational & Private Sector Organizations.

To provide trained human resource to research organizations, six public sector agriculture universities and eight agriculture colleges offer basic and advance courses in agriculture and cotton. In addition, universities with strong biological sciences divisions help in training scientists on various aspects of cotton. The National Textile University and other engineering universities are producing textile engineers for the cotton value chain. These educational and degree awarding institutions have developed linkages with top ranking universities and schools across the globe to be the part of international research teams involved in cotton research.

Special Edition for 75th Plenary Meeting of ICAC

HISTORY OF COTTON VARIETIES EVOLVED IN PAKISTAN

Although Indus Valley is the home of cotton, yet the first variety of American cotton (4F) was released and grown on about 2000 acres in 1914. This was followed with the passage of time by numerous other varieties including 4F, 289F, etc, which formed the base for the introduction of American varieties in Sindh also, where the breeding work on cotton was intensified in 1926. After that research work on breeding of new varieties of both desi and American cottons had been going on in the country since the dawn of the 20th century.

Table-1: YEAR – WISE LIST OF VARIETIES EVOLVED IN PAKISTAN AND THEIR FIBER CHARACTERISTICS

No.	Variety	Year of Release	Lint %	Staple length (mm)	Micronaire (ug inch-1)	Strength (tppsi)
1	CIM-620	2016	40.2	28.9	4.6	93.0
2	Cyto-124	2015	42.6	30.3	4.4	92.4
3	Bt.Cyto-177	2015	40.0	29.0	4.3	99.9
4	Bt.CIM-600	2015	40.3	29.0	4.7	94.8
5	CRIS-129	2014	38.5	28.5	-	98.5
6	Bt CIM-595	2013	39.5	29.0	4.7	97.5
7	Bt CIM-599	2013	41.6	28.9	4.6	95.0
8	Bt CIM-602	2013	40.3	29.1	4.2	94.8
9	CIM-608	2013	41.1	28.5	4.6	93.9
10	CIM-573	2012	39.3	31.6	4.6	90.2
11	Bt CIM-598	2012	41.8	29.0	4.3	94.8
12	BH-167	2012	41.1	29.1	4.7	92.7
13	SLH-317	2012	38.0	29.8	4.4	96.7
14	IR-3701	2011	43.6	25.9	5.7	95.6
15	Ali Akbar-703	2011	37.3	28.5	5.0	104.6
16	MG-6	2011	38.2	27.5	5.3	103.3
17	FH-113	2011	39.0	26.0	5.4	94.0
18	Neelum-121	2011	41.9	26.2	5.1	106.0
19	Sitara 008	2011	40.6	25.8	4.8	101.6
20	Ali Akbar-802	2011	37.6	28.3	5.3	105.5
21	IR-1524	2011	38.4	27.3	5.3	102.0
22	CIRS-342	2010	38.5	28.4	4.3	95.5
23	Sindh-I	2010	37.0	28.0	4.5	97.0
24	Malamal	2010	38.0	30.0	4.0	97.0
25	NIA-Ufaq-2008	2010	38.0	28.5	4.3	97.0

(continued.)

Special Edition for 75th Plenary Meeting of ICAC

Table-1: YEAR – WISE LIST OF VARIETIES EVOLVED IN PAKISTAN AND THEIR FIBER CHARACTERISTICS

No.	Variety	Year of Release	Lint %	Staple length (mm)	Micronaire (ug inch-1)	Strength (tppsi)
26	CIM-554	2009	41.5	28.5	4.7	96.8
27	CIM-534	2006	40.1	29.0	4.5	97.2
28	Hari Dost	2006	35.0	28.0	4.5	97.0
29	Sadori	2006	38.0	28.3	4.4	97.0
30	CRIS-121	2006	36.8	27.5	4.9	98.5
31	CIM-496	2005	41.1	29.7	4.6	93.5
32	CIM-707	2004	38.1	32.2	4.2	97.5
33	CIM-506	2004	38.5	28.7	4.5	98.9
34	BH-160	2004	39.0	29.5	4.2	95.1
35	NIAB-111	2004	37.5	30.5	4.4	90.1
36	CRIS-467	2004	37.0	27.5	4.6	97.2
37	Sohni	2004	38.0	28.0	4.5	98.0
38	CRIS-134	2004	36.5	27.5	-	97.5
39	CIM-499	2003	40.2	29.6	4.4	97.3
40	FH-1000	2003	38.8	29.5	4.6	96.9
41	NIAB-999	2003	36.5	28.7	4.6	98.0
42	CIM-473	2002	39.7	29.6	4.3	95.2
43	FDH-228	2002	43.5	13.9	7.3	96.5
44	Marvi CRIS-5A	2001	35.5	26.8	-	97.5
45	Shahbaz	2001	33.5	28.0	4.6-4.8	98.0
46	CIM-482	2000	39.2	28.5	4.5	98.0
47	FH-900	2000	38.0	28.5	4.3	95.1
48	FH-901	2000	38.0	27.5	5.2	92.0
49	BH-118	2000	38.7	27.6	4.6	96.2
50	MNH-552	2000	40.0	27.5	4.9	95.0
51	MNH-554	2000	41.3	28.0	4.2	94.0
52	CIM-443	1998	36.7	27.6	4.9	96.0
53	CIM-446	1998	36.2	27.0	4.7	97.4
54	FVH-53	1998	38.4	28.6	5.2	98.5
55	CIM-1100	1996	38.0	29.0	3.9	94.0
56	CIM-448	1996	38.0	28.5	4.5	93.8
57	FH-634	1996	36.3	28.5	4.2	96.0
58	MNH-329	1996	41.0	28.5	4.2	96.0
59	Rh-112	1996	34.3	27.6	4.6	95.0
60	Karishma	1996	37.4	28.6	5.0	93.3

(continued.)

Special Edition for 75th Plenary Meeting of ICAC

Table-1: YEAR – WISE LIST OF VARIETIES EVOLVED IN PAKISTAN AND THEIR FIBER CHARACTERISTICS

No.	Variety	Year of Release	Lint %	Staple length (mm)	Micronaire (ug inch-1)	Strength (tppsi)
61	Chandni-95	1996	35.0	30.0	3.9	96.0
62	S-14	1995	43.0	29.5	4.2	93.3
63	SLS-1	1995	35.0	27.4	4.5	95.3
64	FDH-170	1995	40.3	14.1	8.4	94.2
65	CRIS-9	1993	34.5	26.5	-	97.0
66	Gomal	1993	34.5	26.5	4.5	93.0
67	CIM-240	1992	36.5	27.5	4.7	93.7
68	BH-36	1992	38.7	28.0	4.3	100.3
69	FH-682	1992	37.0	28.5	4.3	95.7
70	MNH-147	1992	41.0	28.5	4.4	95.5
71	NIAB-26N	1992	3.0	27.0	4.4	95.0
72	Reshmi	1991	35.7	31.0	4.1	93.0
73	CIM-109	1990	37.5	27.3	4.4	91.0
74	GOHAR-87	1990	35.0	28.0	4.5	98.6
75	RH-1	1990	36.0	29.8	3.9	93.0
76	NIAB-86	1990	31.8	29.0	4.3	95.2
77	FH-87	1988	34.5	27.8	4.2	96.8
78	S-12	1988	36.8	28.8	4.6	91.3
79	Shaheen	1988	35.0	30.0	3.9	96.0
80	CIM-70	1986	31.5	29.0	4.2	92.5
81	MNH-129	1986	31.1	28.7	4.4	94.5
82	Rohi	1986	39.0	15.9	8.0	96.4
83	SLH-41	1985	36.0	26.4	4.4	95.8
84	Rahmani	1985	35.0	27.0	4.4	90.0
85	MS-84	1983	36.7	33.3	3.9	92.8
86	NIAB-78	1983	34.0	27.0	4.6	91.7
87	Ravi	1982	40.3	14.9	8.0	92.0
88	MNH-93	1980	37.0	28.6	4.5	94.3
89	K-68/9	1977	33.0	30.1	4.2	96.0
90	B-557	1975	37.5	28.1	4.5	90.1
91	Sarmast	1975	34.0	29.0	3.9	90.0
92	SKD 10/19	1975	40.6	15.5	10.1	80.0
93	Qalandri	1974	34.0	28.6	3.8	92.7
94	149-F	1971	35.9	28.0	4.0	85.5
95	MS-39	1970	34.5	31.8	3.6	87.2

(continued.)

Special Edition for 75th Plenary Meeting of ICAC

Table-1: YEAR – WISE LIST OF VARIETIES EVOLVED IN PAKISTAN AND THEIR FIBER CHARACTERISTICS

No.	Variety	Year of Release	Lint %	Staple length (mm)	Micronaire (ug inch-1)	Strength (tppsi)
96	MS-40	1970	33.5	31.3	4.0	95.4
97	D9	1970	41.0	14.5	8.2	86.7
98	M-100	1963	34.5	29.0	4.0	85.0
99	TD 1	1963	41.0	15.9	9.4	80.0
100	BS-1	1962	34.0	26.0	4.2	85.0
101	362-F	1959	33.8	23.8	4.5	87.0
102	AC-134	1959	33.0	26.5	4.5	80.0
103	Lasani-11	1959	34.5	28.6	4.0	87.8
104	231 R	1959	40.0	15.9	8.4	86.0
105	238 F	1948	31.5	23.8	4.5	80.0
106	268 F	1948	34.1	24.6	4.5	84.5
107	M4	1942	33.3	28.0	-	85.0

TEXTILE INDUSTRY IN PAKISTAN

There are around 450 textile mills working in Pakistan. The installed capacity of spindles, Rotors and Looms are 13.269 million, 0.201 million and 0.0008 million, respectively. Along with raw cotton, a huge quantity of yarn is also exported from Pakistan. Pakistan produced 3.4 million tons of cotton yarn and 1.04 million sq. meters of cotton cloth in 2014-2015 and 3.3 million tons and 1.03 million sq. meters in 2013-2014 respectively. Pakistan exports cotton yarn more than 0.5 million tons every year and cotton cloth exports recorded more than 0.6 million sq meters every year. Despite of above mentioned commodities, Pakistan also exports raw cotton, bed wears, towels synthetic fiber, knit wear and readymade garments.

COTTON GINNING INDUSTRY

There are 1200 cotton ginning factories are in operation in Pakistan. The ginning industry operates in 80-120 saws type. However, the majority of ginning factories have saw gins of 90 saw blades type. The production capacity of ginning industry in Pakistan ranges from 12 million bales to 35 million bales. The Government is taking some serious steps to upgrade this sector of the industry. Establishment of cotton standards through Pakistan Cotton Standard Institute (PCSI), setting up of a Ginning Institute in public sector are positive steps towards the right direction.

Special Edition for 75th Plenary Meeting of ICAC

PAKISTAN CENTRAL COTTON COMMITTEE

INTRODUCTION

Pakistan Central Cotton Committee an apex cotton research body is contributing significantly by releasing new varieties within the set standards of fiber quality and country wide National Coordinated Varietal Trials. PCCC is catering the cotton requirement of the industry, exporters and other stakeholders by dissemination of data, documentation of cotton trade, pricing and policies at national and international level and Provision of technical support for planning of Cotton Policies at Federal Level. PCCC HQ's is located in Multan.

RESEARCH NET WORK

DIRECTORATES

- Directorate of Agricultural Research, Multan.
- Directorate of Marketing & Economic Research, Multan
- Directorate of Cotton Cess Management, Lahore.

INSTITUTES

- Central Cotton Research Institute, Multan.
- Central Cotton Research Institute, Sakrand.
- Pakistan Institute of Cotton Research & Technology, Karachi.

PROVINCE – WISE RESEARCH STATIONS

1. Punjab : Sahiwal, Bahawalpur
2. Sindh : Ghotki, Mirpurkhas
3. Khyber pakhunkhwa : D.I.Khan
4. Balochistan : Sibi, Lasbella

Special Edition for 75th Plenary Meeting of ICAC

Table-2: VARIETIES DEVELOPED BY THE PCCC FROM 1985 TO 2016

No.	Variety	Year of Release	Lint %	Staple length (mm)	Micronaire (ug inch-1)	Strength (tppsi)
1	SLH-41	1985	36.0	26.4	4.4	95.8
2	CIM-70	1986	31.5	29.0	4.2	92.5
3	Shaheen(Non-Bt)	1988	27.0	26.9	4.2	-
4	CIM-109	1990	37.5	27.3	4.4	91.0
5	CIM-240	1992	36.5	27.5	4.7	93.7
6	BH-36	1992	38.7	28.0	4.3	100.3
7	CRIS-9	1993	34.5	26.5	-	97.0
8	SLS-1	1995	38.0	27.5	4.4	-
9	CIM-1100	1996	38.0	29.0	3.9	94.0
10	CIM-448	1996	38.0	28.5	4.5	93.8
11	CIM-443	1998	36.7	27.6	4.9	96.0
12	CIM-446	1998	36.2	27.0	4.7	97.4
13	CIM-482	2000	39.2	28.5	4.5	98.0
14	BH-118	2000	38.7	27.6	4.6	96.2
15	Marvi CRIS-5A	2001	35.5	26.8	-	97.5
16	CIM-473	2002	39.7	29.6	4.3	95.2
17	CIM-499	2003	40.2	29.6	4.4	97.3
18	CIM-707	2004	38.1	32.2	4.2	97.5
19	CIM-506	2004	38.5	28.7	4.5	98.9
20	CRIS-134	2004	36.5	27.5	-	97.5
21	CRIS-467	2004	37.0	27.5	4.6	97.2
22	CIM-496	2005	41.1	29.7	4.6	93.5
23	CIM-534	2006	40.1	29.0	4.5	97.2
24	CRIS-121	2006	36.8	27.5	4.9	98.5
25	CIM-554	2009	41.5	28.5	4.7	96.8
26	CIRS-342	2010	38.5	28.4	4.3	95.5
27	CIM-573	2012	39.3	31.6	4.7	92.5
28	Bt CIM-598	2012	41.8	29.0	4.3	94.8
29	BH-167	2012	41.1	29.1	4.7	92.7
30	SLH-317	2012	38.0	29.8	4.4	96.7
31	Bt CIM-595	2013	39.5	29.0	4.7	97.5
32	Bt CIM-599	2013	40.3	30.2	4.6	96.3
33	Bt CIM-602	2013	38.0	29.5	4.8	95.0
34	CIM-608	2013	41.1	28.5	4.6	93.9
35	CRIS-129	2014	38.5	28.5	-	98.5
36	Bt CIM-600	2015	40.3	29.0	4.7	94.8
37	Bt Cyto-177	2015	40.0	29.0	4.3	99.9
38	Cyto-124	2015	42.6	30.3	4.4	92.4
39	CIM-620	2016	40.2	28.9	4.6	93.0
40	SLH-8*	2016	39.0	29.0	4.6	-

*Approved for Release

Special Edition for 75th Plenary Meeting of ICAC

Table-3: VARIETIES IN PIPELINE

No.	Variety	Lint %	Staple length (mm)	Micronaire (ug inch-1)	Strength (tppsi)
1	CRIS-486	37.7	28.1	4.3	84.0
2	CRIS-494	39.2	28.2	5.0	85.5
3	CRIS-508	40.5	28.7	4.7	99.4
4	CRIS-512	39.8	29.0	5.4	88.0
5	CRIS-530	44.5	28.3	4.0	85.0
6	CRIS-510	39.0	28.2	-	92.8
7	CRIS-533	40.5	28.8	-	97.8
8	CRIS-585	39.6	28.6	-	92.0
9	CIM-557	38.6	30.0	4.8	101.4
10	CIM-574	44.3	28.6	4.8	94.3
11	CIM-577	37.9	29.4	4.2	95.4
12	CIM-588	40.9	28.7	4.8	92.8
13	CIM-591	41.4	29.5	4.6	97.1
14	CIM-605	40.0	30.4	4.2	93.7
15	SLH-8	39.0	29.0	4.6	-
16	GH-142 (Bt)	29.3	29.1	4.1	-
17	Baghdadi (Bt)	28.4	28.3	3.5	-
18	Mubarak (Bt)	26.2	28.4	4.1	-
19	Hammad (Non-Bt)	27.5	27.0	3.9	-
20	Deebal (Bt)	28.3	28.4	3.5	-



Special Edition for 75th Plenary Meeting of ICAC

PICTURES OF VARIETIES DEVELOPED BY CCRI, MULTAN & CCRI, SAKRAND

The fiber characteristics of these varieties are given as follows:

CRIS - 342



Year of Release	2010
G.O.T. (%)	38.5
Staple Length (mm)	28.4
Micronaire ($\mu\text{g inch}^{-1}$)	4.3
Fiber Strength (tpsi)	98.5

CIM-573



Year of Release	2012
G.O.T. (%)	39.9
Staple Length (mm)	31.0
Micronaire ($\mu\text{g inch}^{-1}$)	4.6
Fiber Strength (tppsi)	93.8

BT. CIM-599



Year of Release	2013
G.O.T. (%)	41.2
Staple Length (mm)	28.7
Micronaire ($\mu\text{g inch}^{-1}$)	4.4
Fiber Strength (tppsi)	93.8

CIM-608



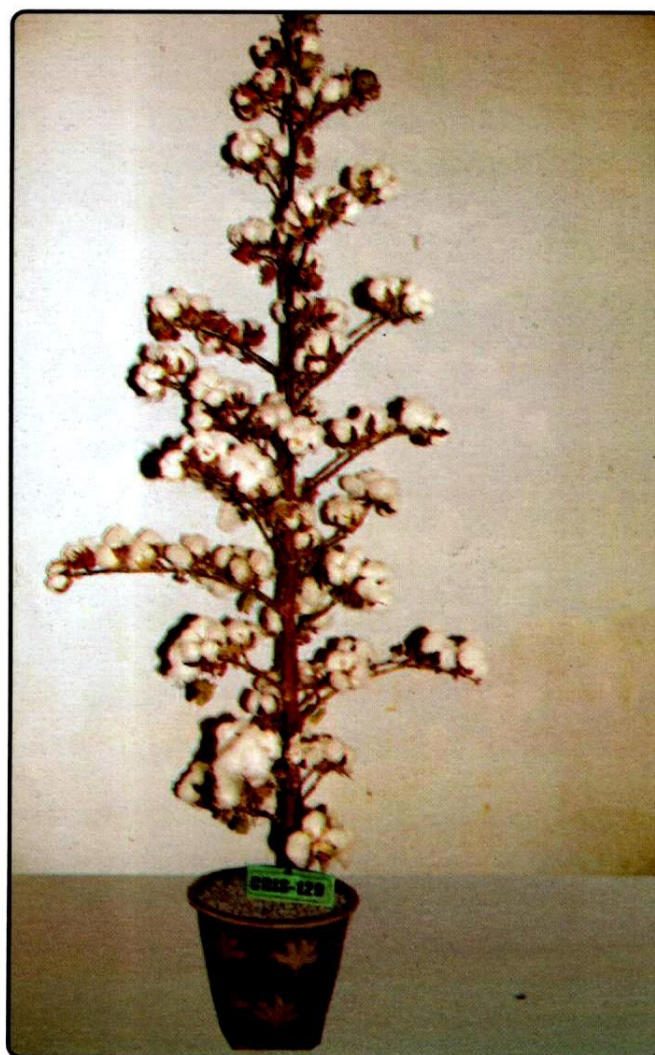
Year of Release	2013
G.O.T. (%)	41.1
Staple Length (mm)	28.5
Micronaire ($\mu\text{g inch}^{-1}$)	4.6
Fiber Strength (tppsi)	93.9

BT. CIM-602



Year of Release	2013
G.O.T. (%)	40.7
Staple Length (mm)	29.0
Micronaire ($\mu\text{g inch}^{-1}$)	4.3
Fiber Strength (tpsi)	95.0

CRIS-129



Year of Release	2014
G.O.T. (%)	38.5
Staple Length (mm)	28.5
Micronaire ($\mu\text{g inch}^{-1}$)	-
Fiber Strength (tppi)	98.5

CYTO-124



Year of Release	2015
G.O.T. (%)	41.6
Staple Length (mm)	28.8
Micronaire ($\mu\text{g inch}^{-1}$)	4.6
Fibre Strength (tpsi)	100.0

CIM-620



Year of Release	2016
G.O.T. (%)	40.2
Staple Length (mm)	28.9
Micronaire ($\mu\text{g inch}^{-1}$)	4.6
Fiber Strength (tppsi)	93.0

Special Edition for 75th Plenary Meeting of ICAC

PCCC'S FOCUSED AREAS

- Develop high yielding, pest & virus resistant varieties.
- Evolution of long and extra-long staple cotton varieties.
- Development of CLCV resistant varieties.
- Development of commercial cotton hybrids.
- Development of Bt. Cotton.
- Technical support of Khyber Pakhtoon Khawa & Baluchistan governments for promotion of cotton cultivation.
- Strengthen technological testing and training facilities to benefit textile industry.
- Cotton Market investigations & economic research for policy feedback.
- Establishment of data bank.
- Cotton Research and Statistical Publications.
- National & International Coordination.

COTTON R&D FRAMEWORK

- Research planning through integrated approach.
- Linkage with national and international research institutes.
- Emphasis on biological control, biotechnology and virology.
- Human resource development.
- Promotion of cotton cultivation in Baluchistan and KPK.
- Streamline and strengthen technology transfer mechanism.

Special Edition for 75th Plenary Meeting of ICAC

COTTON STATISTICS OF PAKISTAN

COTISTICS (Vol. 45) Directorate of Marketing & Economic Research, PCCC Multan

Special Edition for 75th Plenary Meeting of ICAC

1- COTTON AREA

PROVINCE/ DIVISION/ DISTRICT	11 - 12	12 - 13	13 - 14	14 - 15	15 - 16*
1	2	3	4	5	6
	(' 000' hectares)				
PAKISTAN	2861.56	2878.83	2805.65	2958.30	2901.98
PUNJAB	2533.69	2308.68	2199.02	2322.85	2242.72
RAWALPINDI DIVISION	0.41	0.82	0.41	0.82	0.41
Chakwal	0.00	0.41	0.00	0.41	0.00
Jhelum	0.41	0.41	0.41	0.41	0.41
SARGODHA DIVISION	75.27	79.31	76.48	114.92	108.85
Sargodha	12.95	10.93	7.69	8.09	6.88
Khushab	2.84	3.24	1.62	1.21	3.23
Mianwali	34.80	40.87	41.68	57.87	54.63
Bhakkar	24.68	24.27	25.49	47.75	44.11
FAISALABAD DIVISION	198.29	151.75	123.43	110.88	106.83
Faisalabad	60.70	44.91	32.78	30.35	29.54
Toba Tek Singh	59.08	44.11	41.68	42.49	37.23
Jhang	74.46	59.08	45.73	35.61	38.44
Chiniot	4.05	3.65	3.24	2.43	1.62
GUJRANWALA DIVISION	2.42	2.02	1.21	1.21	0.81
Mandi Bahauddin	2.42	2.02	1.21	1.21	0.81
LAHORE DIVISION	20.64	14.17	13.35	12.55	9.31
Sheikhupura	0.00	0.81	0.00	0.41	0.00
Nankana Sahib	1.62	1.22	1.22	0.81	0.00
Kasur	19.02	12.14	12.13	11.33	9.31
SAHIWAL DIVISION	186.57	156.22	143.26	152.15	151.77
Okara	35.21	27.92	22.66	20.23	22.26
Sahiwal	96.72	86.61	81.75	80.53	85.80
Pak Pattan	54.64	41.69	38.85	51.39	43.71
MULTAN DIVISION	829.58	783.85	747.03	744.21	738.13
Multan	179.68	169.16	158.23	145.69	163.89
Khanewal	208.40	190.60	183.72	191.01	195.86
Vehari	230.66	200.31	196.27	208.41	188.18
Lodhran	210.84	223.78	208.81	199.10	190.20
D.G KHAN DIVISION	441.10	396.97	391.73	448.38	427.33
Muzaffargarh	171.17	163.89	153.37	141.63	145.68
Layyah	47.75	53.01	51.39	53.83	45.32
D.G. Khan	97.94	72.84	87.82	109.26	94.69
Rajanpur	124.24	107.23	99.15	143.66	141.64
BAHAWALPUR DIVISION	779.41	723.57	702.12	737.73	699.28
Bahawalpur	283.68	273.16	267.90	279.63	273.16
Bahawalnagar	251.71	228.65	205.98	219.34	219.33
Rahimyar Khan	244.02	221.76	228.24	238.76	206.79

* Provisional

Continued

Special Edition for 75th Plenary Meeting of ICAC

1- COTTON AREA

PROVINCE/ DIVISION/ DISTRICT	11 - 12	12 - 13	13 - 14	14 - 15	15 - 16*
1	2	3	4	5	6
(' 000' hectares)					
SINDH	259.19	530.10	567.98	596.21	621.25
SUKKUR DIVISION	199.96	234.14	246.83	264.43	304.13
khairpur	56.31	62.72	78.98	79.21	81.39
Ghotki	71.19	63.46	52.54	62.40	90.16
Sukkur	30.13	25.31	28.68	30.44	33.79
Naushero Feroze	32.83	30.80	31.48	33.41	35.35
Nawabshah (Shaheed Benazirabad)	9.50	51.85	55.15	58.97	63.44
LARKANA DIVISION	0.97	3.12	1.55	1.34	0.00
Larkana	0.91	3.10	1.54	1.30	0.00
Jacobabad	0.00	0.00	0.00	0.00	0.00
Kashmore	0.02	0.00	0.00	0.00	0.00
Shikarpur	0.04	0.02	0.01	0.04	0.00
HYDERABAD DIVISION	32.91	112.45	129.12	134.12	122.72
Dadu	3.15	8.28	11.72	11.30	8.84
Hyderabad	2.67	6.55	6.57	6.54	6.52
Jamshoro	5.51	16.22	17.01	17.25	12.05
Matiari	17.64	36.84	40.39	41.92	40.55
Tando Allah Yar	2.15	21.28	22.77	23.83	22.84
Tando Mohammad Khan	0.23	3.32	4.38	4.26	3.74
Badin	0.00	13.07	21.00	21.67	21.49
Thatta	1.56	6.87	5.29	7.35	6.68
MIRPUR KHAS DIVISION	24.78	179.84	189.85	195.39	193.95
Sanghar	13.37	121.47	123.49	128.24	124.40
Umerkot	2.44	25.24	25.04	27.94	29.14
Mirpur Khas	8.92	32.09	40.20	38.12	39.35
Tharparkar	0.06	1.04	1.13	1.09	1.06
KARACHI DIVISION	0.57	0.57	0.63	0.93	0.45
KHYBER PAKHTUNKHWA	0.24	0.24	0.26	2.95	0.40
D.I. KHAN DIVISION	0.22	0.23	0.25	2.95	0.40
D.I. Khan	0.22	0.23	0.25	2.95	0.40
BANNU DIVISION	0.01	0.01	0.00	0.00	0.00
Bannu	0.01	0.01	0.00	0.00	0.00
MARDAN DIVISION	0.01	0.01	0.01	0.00	0.00
Mardan	0.01	0.01	0.01	0.00	0.00
BALOCHISTAN	41.46	39.81	38.39	41.24	37.61
QUETTA DIVISION	2.88	2.87	2.69	2.63	2.59
Chagai	2.88	0.00	0.00	0.04	0.03
Nushki	0.00	2.87	2.69	2.59	2.56
ZHOB DIVISION	3.34	1.91	1.72	1.72	1.09
Loralai	0.22	0.22	0.21	0.23	0.21
Barkhan	3.03	1.61	1.43	1.41	0.80
Kila Saifullah	0.09	0.08	0.08	0.08	0.08
SIBI DIVISION	9.23	8.30	8.45	8.60	8.20
Sibi	7.40	7.00	6.98	7.00	6.92
Kohlu	0.48	0.21	0.20	0.19	0.13
Dera Bughti	1.35	1.09	1.28	1.41	1.15
NASIRABAD DIVISION	1.76	1.78	1.79	1.71	1.72
Jafarabad	0.00	0.00	0.00	0.00	0.00
Nasirabad	0.00	0.00	0.00	0.03	0.03
Bolan	1.65	1.67	1.68	1.69	1.69
Jhalmagsi	0.11	0.11	0.11	0.00	0.00
KALAT DIVISION	23.04	24.25	22.77	24.86	22.62
Khuzdar	2.71	2.68	2.63	3.28	3.28
Lasbella	16.91	17.39	16.07	17.48	15.36
Awaran	0.98	1.33	1.29	1.32	1.33
Washuk	0.00	0.00	0.11	0.11	0.11
Kharan	2.44	2.85	2.67	2.67	2.55
MAKRAN DIVISION	1.21	0.70	0.97	1.72	1.39
Panjgoor	*	0.11	0.00	0.03	0.03
Turbat	1.21	0.59	0.97	1.69	1.36

Source:- Director Major Crop. *Not exceeding 500.

Special Edition for 75th Plenary Meeting of ICAC

2- COTTON PRODUCTION

PROVINCE/ DIVISION/ DISTRICT	11 - 12	12 - 13	13 - 14	14 - 15	15 - 16*
1	2	3	4	5	6
(' 000' bales)					
PAKISTAN	13594.99	13030.64	12768.88	13959.58	9917.41
PUNJAB	11129.00	9526.00	9145.00	10277.00	6343.00
RAWALPINDI DIVISION	0.51	0.80	0.92	1.96	0.39
Chakwal	0.00	0.39	0.00	0.96	0.00
Jhelum	0.51	0.41	0.92	1.00	0.39
SARGODHA DIVISION	217.18	227.29	214.91	348.65	229.51
Sargodha	32.72	26.20	9.25	14.51	8.98
Khushab	6.12	6.12	3.02	1.82	6.56
Mianwali	94.87	108.87	128.15	173.91	128.32
Bhakkar	83.47	86.10	74.49	158.41	85.65
FAISALABAD DIVISION	586.96	415.30	343.47	399.55	236.76
Faisalabad	169.76	117.27	80.55	100.24	63.48
Toba Tek Singh	192.22	141.52	140.80	196.55	90.39
Jhang	214.87	149.58	116.30	98.33	80.09
Chiniot	10.11	6.93	5.82	4.43	2.80
GUJRANWALA DIVISION	3.64	2.66	1.28	2.39	0.93
Mandi Bahauddin	3.64	2.66	1.28	2.39	0.93
LAHORE DIVISION	51.69	33.95	30.61	30.24	16.01
Sheikhupura	2.62	2.33	0.00	1.12	0.00
Nankana Sahib	0.00	1.47	1.80	1.48	0.00
Kasur	49.07	30.15	28.81	27.64	16.01
SAHIWAL DIVISION	860.20	724.59	595.76	669.02	357.68
Okara	150.71	138.65	99.52	92.76	66.13
Sahiwal	445.83	405.87	327.05	350.21	184.92
Pak Patan	263.66	180.07	169.19	226.05	106.63
MULTAN DIVISION	4005.41	3567.43	3339.52	3411.19	1703.15
Multan	870.39	774.57	690.18	663.45	354.44
Khanewal	1052.88	802.82	956.22	892.77	430.55
Vehari	1111.13	939.70	938.34	947.10	447.71
Lodhran	971.01	1050.34	754.78	907.87	470.45
D.G KHAN DIVISION	1674.53	1381.85	1471.03	1974.08	1339.94
Muzaffargarh	660.94	608.44	549.34	631.32	317.66
Layyah	147.12	153.70	145.41	172.40	141.05
D.G. Khan	391.58	242.15	317.06	471.14	244.80
Rajanpur	474.89	377.56	459.22	699.22	636.43
BAHAWALPUR DIVISION	3728.88	3172.13	3147.50	3439.92	2458.63
Bahawalpur	1363.48	1176.32	1151.77	1286.55	904.78
Bahawalnagar	1240.10	1081.81	1085.40	1119.18	810.19
Rahimyar Khan	1125.30	914.00	910.33	1034.19	743.66

*Provisional

Special Edition for 75th Plenary Meeting of ICAC

2- COTTON PRODUCTION

PROVINCE/ DIVISION/ DISTRICT	11 - 12	12 - 13	13 - 14	14 - 15	15 - 16*
1	2	3	4	5	6
	(' 000' bales)				
SINDH	2356.84	3400.39	3523.42	3572.54	3475.60
SUKKUR DIVISION	1322.54	1324.84	1349.99	1483.76	1736.96
khairpur	362.16	324.21	427.95	434.20	419.29
Ghotki	466.13	354.57	281.75	351.06	561.90
Sukkur	190.24	136.82	148.93	188.96	214.71
Naushero Feroze	207.63	169.71	167.59	188.84	206.80
Nawabshah (Shaheed Benazirabad)	96.38	339.53	323.77	320.70	334.26
LARKANA DIVISION	5.15	20.17	6.62	6.65	0.00
Larkana	4.87	20.08	6.56	6.44	0.00
Jacobabad	0.00	0.00	0.00	0.00	0.00
Kashmore	0.09	0.00	0.00	0.00	0.00
Shikarpur	0.19	0.09	0.06	0.21	0.00
HYDERABAD DIVISION	417.55	781.11	834.91	802.07	649.35
Dadu	15.71	47.18	65.06	69.97	42.81
Hyderabad	31.29	44.28	41.29	39.32	37.13
Jamshoro	57.61	94.16	110.14	98.16	70.18
Matiari	194.00	274.14	283.13	265.35	221.90
Tando Allah Yar	40.20	150.05	141.60	143.09	132.74
Tando Mohammad Khan	13.07	25.37	27.77	24.02	17.04
Badin	44.57	102.66	133.77	121.15	99.91
Thatta	21.09	42.28	32.16	41.01	27.63
MIRPUR KHAS DIVISION	608.14	1271.82	1328.60	1275.72	1087.12
Sanghar	447.51	899.30	879.80	849.52	698.80
Umerkot	43.50	156.93	147.69	171.37	169.36
Mirpur Khas	115.32	209.73	294.35	248.93	213.40
Tharparkar	1.81	5.86	6.76	5.90	5.57
KARACHI DIVISION	3.47	3.46	3.30	4.34	2.17
KHYBER PAKHTUNKHWA	0.66	0.67	0.75	2.95	1.22
D.I. KHAN DIVISION	0.65	0.66	0.74	2.95	1.22
D.I. Khan	0.65	0.66	0.74	2.95	1.22
BANNU DIVISION	0.00	0.00	0.00	0.00	0.00
Lakki Marwat	0.00	0.00	0.00	0.00	0.00
MARDAN DIVISION	0.01	0.01	0.01	0.01	0.00
Mardan	0.01	0.01	0.01	0.00	0.00
BALUCHISTAN	108.49	103.58	99.71	107.08	97.59
QUETTA DIVISION	7.07	7.02	6.59	6.43	6.35
Chagai	7.07	0.00	0.00	0.10	0.08
Nushki	0.00	7.02	6.59	6.33	6.27
ZHOB DIVISION	8.52	4.89	4.38	4.39	2.80
Loralai	0.57	0.56	0.52	0.59	0.55
Barkhan	7.74	4.13	3.66	3.60	2.05
Kila Saifullah	0.21	0.20	0.20	0.20	0.20
SIBI DIVISION	24.55	20.67	21.02	21.36	20.40
Sibi	19.90	17.57	17.51	17.56	17.38
Kohlu	1.19	0.53	0.49	0.49	0.31
Dera Bughti	3.46	2.57	3.02	3.32	2.71
NASIRABAD DIVISION	4.40	4.44	4.48	4.28	4.29
Jafarabad	0.00	0.00	0.00	0.00	0.00
Nasirabad	0.00	0.00	0.00	0.07	0.07
Bolan	4.13	4.18	4.20	4.21	4.22
Jhalmagsi	0.27	0.27	0.27	0.00	0.00
KALAT DIVISION	61.52	64.77	60.81	66.33	60.27
Khuzdar	6.78	6.70	6.58	8.19	8.20
Lasbella	45.65	46.95	43.40	47.20	41.47
Awaran	2.63	3.58	3.47	3.56	3.58
Washuk	0.00	0.00	0.30	0.29	0.28
Kharan	6.46	7.54	7.07	7.09	6.74
MAKRAN DIVISION	2.43	1.48	2.43	4.29	3.48
Panjgoor	*	0.00	0.00	0.07	0.07
Turbat	2.43	1.48	2.43	4.22	3.41

Source:-Director, Major Crops Provincial Agriculture Departments

*Not exceeding 500. *Provisional

Special Edition for 75th Plenary Meeting of ICAC

3- COTTON YIELD

PROVINCE/ DIVISION/ DISTRICT	11 - 12	12 - 13	13 - 14	14 - 15	15 - 16*
1	2	3	4	5	6
(Kgs. per hectare)					
PAKISTAN	815	769	774	802	581
PUNJAB	747	701	707	752	481
RAWALPINDI DIVISION	211	166	381	406	162
Chakwal	0.00	162	0.00	398	0.00
Jhelum	211	170	381	415	162
SARGODHA DIVISION	491	487	478	516	358
Sargodha	430	408	204	305	222
Khushab	366	321	317	256	345
Mianwali	463	453	523	511	399
Bhakkar	575	603	497	564	330
FAISALABAD DIVISION	503	465	473	613	377
Faisalabad	475	444	418	561	365
Toba Tek Singh	553	545	574	786	413
Jhang	491	430	432	469	354
Chiniot	424	323	305	310	294
GUJRANWALA DIVISION	256	224	180	336	195
Mandi Bahauddin	256	224	180	336	195
LAHORE DIVISION	426	407	390	410	292
Sheikhupura	0.00	489	0.00	464	0.00
Nankana Sahib	0.00	205	251	311	0.00
Kasur	439	422	404	415	292
SAHIWAL DIVISION	784	789	707	748	401
Okara	728	844	747	779	505
Sahiwal	784	797	680	739	366
Pak Patan	820	734	740	748	415
MULTAN DIVISION	821	774	760	779	392
Multan	823	778	742	774	368
Khanewal	859	716	885	795	374
Vehari	819	798	813	773	404
Lodhran	783	798	614	775	420
D.G KHAN DIVISION	645	592	638	748	533
Muzaffargarh	656	631	609	758	371
Layyah	524	493	481	544	529
D.G. Khan	680	565	614	733	439
Rajanpur	650	599	787	827	764
BAHAWALPUR DIVISION	813	745	762	793	598
Bahawalpur	817	732	731	782	563
Bahawalnagar	838	701	896	867	628
Rahimyar Khan	784	804	678	736	611

* Provisional

Special Edition for 75th Plenary Meeting of ICAC

3- COTTON YIELD

PROVINCE/ DIVISION/ DISTRICT	11 - 12	12 - 13	13 - 14	14 - 15	15 - 16*
1	2	3	4	5	6
(Kgs. per hectare)					
SINDH	1546	1090	1055	1019	951
SUKKUR DIVISION	1124	962	930	954	971
khairpur	1093	879	921	932	876
Ghotki	1113	950	912	956	1059
Sukkur	1074	919	883	1055	1080
Naushero Feroze	1075	937	905	961	995
Nawabshah (Shaheed Benazirabad)	1724	1113	998	924	896
LARKANA DIVISION	901	1099	726	844	0.00
Larkana	909	1101	724	843	0.00
Jacobabad	0.00	0.00	0.00	0.00	0.00
Kashmore	903	0.00	0.00	0.00	0.00
Shikarpur	808	748	864	804	0.00
HYDERABAD DIVISION	2156	1181	1099	1017	900
Dadu	846	968	944	1053	823
Hyderabad	1988	1148	1069	1022	968
Jamshoro	1778	987	1101	967	990
Matiari	1869	1265	1192	1076	930
Tando Allah Yar	3178	1199	1057	1021	988
Tando Mohammad Khan	9265	1299	1078	959	774
Badin	280	1335	1083	950	790
Thatta	2298	1046	1033	949	703
MIRPUR KHAS DIVISION	4172	1202	1190	1110	953
Sanghar	5690	1259	1211	1126	955
Umerkot	3033	1057	1003	1043	988
Mirpur Khas	2199	1111	1245	1110	922
Tharparkar	5383	958	1021	918	889
KARACHI DIVISION	1035	1032	890	793	820
KHYBER PAKHTUNKHWA	467	475	490	522	519
D.I. KHAN DIVISION	502	488	510	522	519
D.I. Khan	502	488	510	522	519
BANNU DIVISION	136	0.00	0.00	0.00	0.00
Bannu	0.00	0.00	0.00	0.00	0.00
MARDAN DIVISION	221	170	283	170	0.00
Mardan	221	170	283	0.00	0.00
BALOCHISTAN	445	442	441	474	441
QUETTA DIVISION	417	416	416	424	417
Chagai	417	0.00	0.00	0.00	385
Nushki	0.00	416	416	17.00	417
ZHOB DIVISION	434	433	435	436	437
Loralai	442	430	438	36	438
Barkhan	434	434	435	37	435
Kila Saifullah	397	421	421	425	421
SIBI DIVISION	452	423	423	423	423
Sibi	457	427	427	428	427
Kohlu	421	429	425	429	426
Dera Bughti	437	401	401	403	401
NASIRABAD DIVISION	425	424	425	406	424
Jafarabad	0.00	0.00	0.00	0.00	0.00
Nasirabad	0.00	0.00	0.00	0.00	419
Bolan	425	425	425	426	425
Jhalmagsi	414	414	426	0.00	0.00
KALAT DIVISION	454	454	454	453	453
Khuzdar	425	425	425	526	425
Lasbella	459	459	459	459	459
Awaran	457	457	457	458	457
Washuk	0.00	0.00	463	448	445
Kharan	450	450	450	452	450
MAKRAN DIVISION	0.00	426	425	424	426
Panjgoor	0.00	0.00	0.00	397	419
Turbat	0.00	426	425	424	425

*Provisional

Special Edition for 75th Plenary Meeting of ICAC

4- COTTON SEED PRODUCTION

PROVINCE/ DIVISION/ DISTRICT	11 - 12	12 - 13	13 - 14	14 - 15	15 - 16*
1	2	3	4	5	6
(' 000' metric tons)					
PAKISTAN	4618.86	4430.42	4341.42	4746.26	3371.92
PUNJAB	3780.42	3238.84	3109.30	3494.18	2156.62
RAWALPINDI DIVISION	0.17	0.27	0.31	0.67	0.13
Chakwal	0.00	0.13	0.00	0.33	0.00
Jhelum	0.17	0.14	0.31	0.34	0.13
SARGODHA DIVISION	73.84	77.28	73.07	118.54	78.03
Sargodha	11.12	8.91	3.15	4.93	3.05
Khushab	2.08	2.08	1.03	0.62	2.23
Mianwali	32.26	37.02	43.57	59.13	43.63
Bhakkar	28.38	29.27	25.33	53.86	29.12
FAISALABAD DIVISION	196.13	141.20	116.78	135.85	80.50
Faisalabad	57.72	39.87	27.39	34.08	21.58
Toba Tek Singh	65.35	48.12	47.87	66.83	30.73
Jhang	73.06	50.86	39.54	33.43	27.23
Chiniot	0.00	2.36	1.98	1.51	0.95
GUJRANWALA DIVISION	1.24	0.90	0.44	0.81	0.32
Mandi Bahauddin	1.24	0.90	0.44	0.81	0.32
LAHORE DIVISION	17.57	11.54	10.41	10.28	5.44
Sheikhupura	0.89	0.79	0.00	0.38	0.00
Nankana Sahib	0.00	0.50	0.61	0.50	0.00
Kasur	16.68	10.25	9.80	9.40	5.44
SAHIWAL DIVISION	292.47	246.36	202.56	227.47	121.61
Okara	51.24	47.14	33.84	31.54	22.48
Sahiwal	151.58	138.00	111.20	119.07	62.87
Pak Patan	89.64	61.22	57.52	76.86	36.25
MULTAN DIVISION	1361.84	1212.93	1135.44	1159.80	579.07
Multan	295.93	263.35	234.66	225.57	120.51
Khanewal	357.98	272.96	325.11	303.54	146.39
Vehari	377.78	319.50	319.04	322.01	152.22
Lodhran	330.14	357.12	256.63	308.68	159.95
D.G KHAN DIVISION	569.34	469.83	500.15	671.19	455.58
Muzaffargarh	224.72	206.87	186.78	214.65	108.00
Layyah	50.02	52.26	49.44	58.62	47.96
D.G. Khan	133.14	82.33	107.80	160.19	83.23
Rajanpur	161.46	128.37	156.13	237.73	216.39
BAHAWALPUR DIVISION	1267.82	1078.52	1070.15	1169.57	835.93
Bahawalpur	463.58	399.95	391.60	437.43	307.63
Bahawalnagar	421.63	367.82	369.04	380.52	275.46
Rahimyar Khan	382.60	310.76	309.51	351.62	252.84

*Provisional

Special Edition for 75th Plenary Meeting of ICAC

4- COTTON SEED PRODUCTION

PROVINCE/ DIVISION/ DISTRICT	11 - 12	12 - 13	13 - 14	14 - 15	15 - 16*
1	2	3	4	5	6
(' 000' Metric Tons)					
SINDH	801.33	1156.13	1197.96	1214.66	1181.70
SUKKUR DIVISION	449.66	450.45	459.00	504.48	590.57
khairpur	123.13	110.23	145.50	147.63	142.56
Ghotki	158.49	120.55	95.80	119.36	191.05
Sukkur	64.68	46.52	50.64	64.25	73.00
Naushero Feroze	70.59	57.70	56.98	64.21	70.31
Nawabshah (Shaheed Benazirabad)	32.77	115.44	110.08	109.04	113.65
LARKANA DIVISION	1.75	6.86	2.25	2.26	0.00
Larkana	1.65	6.83	2.23	2.19	0.00
Jacobabad	0.00	0.00	0.00	0.00	0.00
Kashmore	0.03	0.00	0.00	0.00	0.00
Shikarpur	0.06	0.03	0.02	0.07	0.00
HYDERABAD DIVISION	141.97	265.24	283.87	272.70	220.78
Dadu	5.34	16.04	22.12	23.79	14.56
Hyderabad	10.64	15.06	14.04	13.37	12.62
Jamshoro	19.59	32.01	37.45	33.37	23.86
Matiali	65.96	93.21	96.26	90.22	75.45
Tando Allah Yar	13.67	51.02	48.14	48.65	45.13
Tando Mohammad Khan	4.45	8.62	9.44	8.17	5.79
Badin	15.15	34.90	45.48	41.19	33.97
Thatta	7.17	14.37	10.93	13.94	9.40
MIRPUR KHAS DIVISION	206.77	432.42	451.72	433.75	369.62
Sanghar	152.15	305.76	299.13	288.84	237.59
Umerkot	14.79	53.36	50.21	58.27	57.58
Mirpur Khas	39.21	71.31	100.08	84.64	72.56
Tharparkar	0.61	1.99	2.30	2.00	1.89
KARACHI DIVISION	1.18	1.18	1.12	1.47	0.74
KHYBER PAKHTUNKHWA	0.22	0.22	0.25	1.01	0.41
D.I. KHAN DIVISION	0.22	0.22	0.25	1.00	0.41
D.I. Khan	0.22	0.22	0.25	1.00	0.41
BANNU DIVISION	0.00	0.00	0.00	0.00	0.00
Lakki Marwat	0.00	0.00	0.00	0.00	0.00
MARDAN DIVISION	0.00	0.00	0.00	0.00	0.00
Mardan	0.00	0.00	0.00	0.00	0.00
BALUCHISTAN	36.89	35.22	33.90	36.41	33.18
QUETTA DIVISION	2.40	2.39	2.24	2.19	2.16
Chagai	2.40	0.00	0.00	0.03	0.03
Nushki	0.00	2.39	2.24	2.15	2.13
ZHOB DIVISION	2.90	1.66	1.49	1.49	0.95
Loralai	0.19	0.19	0.18	0.20	0.19
Barkhan	2.63	1.41	1.24	1.22	0.70
Kila Saifullah	0.07	0.07	0.07	0.07	0.07
SIBI DIVISION	8.35	7.03	7.15	7.26	6.94
Sibi	6.77	5.97	5.95	5.97	5.91
Kohlu	0.40	0.18	0.17	0.16	0.11
Dera Bughti	1.18	0.87	1.03	1.13	0.92
NASIRABAD DIVISION	1.49	1.51	1.52	1.46	1.46
Jafarabad	0.00	0.00	0.00	0.00	0.00
Nasirabad	0.00	0.00	0.00	0.02	0.03
Bolan	1.40	1.42	1.43	1.43	1.43
Jhalmagsi	0.09	0.09	0.09	0.00	0.00
KALAT DIVISION	20.92	22.02	20.68	22.55	20.49
Khuzdar	2.30	2.28	2.24	2.78	2.79
Lasbella	15.52	15.96	14.75	16.05	14.10
Awaran	0.90	1.22	1.18	1.21	1.22
Washuk	0.00	0.10	0.10	0.10	0.09
Kharan	2.20	2.56	2.40	2.41	2.29
MAKRAN DIVISION	0.83	0.60	0.93	1.46	1.18
Pujgoor	0.00	0.00	0.00	0.03	0.03
Turbat	1.21	0.50	0.83	1.44	1.16

*Not exceeding 500. *Provisional

Special Edition for 75th Plenary Meeting of ICAC

5 - SEED COTTON ARRIVALS INTO GINNING FACTORIES

PROVINCE/ DIVISION/ DISTRICT	11 - 12	12 - 13	13 - 14	14 - 15	15 - 16
1	2	3	4	5	6
PAKISTAN	14,813,779	12,915,585	13,391,694	14,971,174	9,768,443
PUNJAB	12,132,080	9,508,418	9,631,362	10,896,674	6,002,406
Multan	700,893	440,908	495,893	498,076	129,784
Lodhran	480,108	281,905	386,486	373,711	97,437
Khanewal	1,207,017	968,113	936,563	988,805	406,296
Muzaffargarh	541,533	444,373	413,961	494,324	269,822
Dera Ghazi Khan	438,353	350,309	394,129	492,247	291,145
Rajanpur	491,439	420,279	411,578	568,215	405,437
Layyah	295,135	256,059	278,304	395,328	251,988
Vehari	1,114,234	916,753	876,561	810,068	313,683
Sahiwal	765,560	604,292	534,340	603,297	256,024
Pakpattan	352,397	259,912	173,701	173,503	66,478
Okara	62,450	58,318	45,592	52,728	22,148
Qasur	44,100	43,800	28,386	22,400	11,376
Toba Tek Singh	415,705	296,440	234,968	333,199	141,651
Faisalabad	139,753	64,970	64,188	99,133	52,839
Jhang	264,296	162,123	118,360	74,084	42,680
Mianwali	371,602	332,830	310,413	463,887	343,763
Bhakkar	175,408	187,914	176,231	193,750	82,759
Sargodha	54,500	34,100	38,514	26,582	11,607
Rahimyar Khan	1,518,515	1,059,482	1,184,464	1,411,756	1,114,280
Bahawalpur	1,268,879	1,113,691	1,110,363	1,339,338	746,101
Bahawalnagar	1,430,203	1,211,847	1,418,367	1,482,243	945,108
SINDH	2,620,199	3,354,142	3,697,284	3,897,498	3,708,992
Hyderabad	204,961	253,738	299,110	266,731	250,607
Mirpur khas/ Umerkot	187,574	404,824	362,049	403,461	274,145
Sanghar	794,250	1,343,131	1,404,738	1,514,268	1,346,564
Nawabshah (Shaheed Benazirabad)	200,111	234,280	292,988	313,761	312,622
Naushero Feroze	205,683	190,734	250,303	258,265	283,084
khairpur	214,062	188,400	240,387	250,548	270,431
Ghotki	302,110	206,059	212,279	228,311	320,698
Sukkur	344,525	309,144	359,126	415,889	448,068
Dadu	50,967	39,700	35,500	44,664	36,328
Jamshoro	88,124	143,182	187,279	146,900	134,800
Badeen	27,832	40,950	53,525	54,700	31,645
Balochistan	61,500	53,025	63,048	77,002	57,045

Source:- Pakistan Cotton Ginners' Association.

Special Edition for 75th Plenary Meeting of ICAC

6 - RAW COTTON PRESSING IN GINNING FACTORIES

PROVINCE/ DIVISION/ DISTRICT	11 - 12	12 - 13	13 - 14	14 - 15	15 - 16
1	2	3	4	5	6
(bales)					
PAKISTAN	14,805,789	12,912,055	13,388,747	14,868,888	9,764,552
PUNJAB	12,124,490	9,506,888	9,629,482	10,894,590	5,999,596
Multan	700,393	440,708	495,893	498,076	129,784
Lodhran	479,508	281,705	386,486	373,711	96,937
Khanewal	1,206,217	967,963	936,463	988,705	406,196
Muzaffargarh	541,533	444,373	413,961	494,324	269,822
Dera Ghazi Khan	438,153	350,309	394,129	492,247	291,145
Rajanpur	491,439	420,279	411,578	568,215	405,437
Layyah	295,135	256,059	278,304	395,328	251,988
Vehari	1,113,284	916,723	876,561	809,968	313,483
Sahiwal	765,320	604,192	534,340	602,997	256,024
Pakpattan	352,397	259,912	173,671	173,503	66,478
Okara	62,450	58,318	45,592	52,728	22,148
Qasur	44,100	43,800	28,386	22,400	11,376
Toba Tek Singh	415,005	296,240	234,668	333,099	141,551
Faisalabad	139,553	64,970	64,188	99,133	52,639
Jhang	264,096	161,873	117,010	72,900	42,280
Mianwali	371,202	332,830	310,413	463,787	343,763
Bhakkar	175,408	187,914	176,231	193,750	82,759
Satgodha	54,500	34,100	38,514	26,582	11,607
Rahimyar Khan	1,518,015	1,059,482	1,184,464	1,411,756	1,114,280
Bahawalpur	1,268,379	1,113,491	1,110,263	1,339,338	745,601
Bahawalnagar	1,428,403	1,211,647	1,418,367	1,482,043	944,298
SINDH	2,619,799	3,352,142	3,696,217	3,897,296	3,707,911
Hyderabad	204,961	253,738	298,689	266,731	249,726
Mirpur khas/ Umerkot	187,474	404,824	362,049	403,361	274,145
Sanghar	793,950	1,341,131	1,404,538	1,514,268	1,346,364
Nawabshah	200,111	234,280	292,988	313,761	312,622
Khairpur	214,062	190,734	240,387	258,265	283,084
Ghotki	302,110	188,400	212,279	250,547	270,431
Sukkur	344,525	206,059	359,126	228,310	320,698
Naushero Feroze	205,683	309,144	250,303	415,889	448,068
Dadu	50,967	39,700	35,500	44,664	36,328
Jamshoro	88,124	143,182	187,233	146,900	134,800
Badeen	27,832	40,950	53,125	54,600	31,645
Balochistan	61,500	53,025	63,048	77,002	57,045

Source:- Pakistan Cotton Ginners' Association.

Special Edition for 75th Plenary Meeting of ICAC

7 - SUPPLY AND DISTRIBUTION POSITION OF COTTON

POSITION	11 - 12	12 - 13	13 - 14	14 - 15	15 - 16*	11 - 12	12 - 13	13 - 14	14 - 15	15 - 16*
1	2	3	4	5	6	7	8	9	10	11
	('000' bales)					('000' metric tons)				
1. Carry-over	691	833	1,638	701	398	117	143	279	118	66
2. Production	14,814	13,030	12,769	13,996	9,768	2,518	2,215	2,171	2,379	1,661
3. Imports	1,015	2,528	1,477	987	2,566	173	430	251	168	436
Total	16,520	16,391	15,884	15,684	12,732	2,808	2,788	2,701	2,665	2,163
4. Mill Consumption	14,178	14,209	14,503	14,727	11,533	2,408	2,416	2,467	2,504	1,961
5. Exports	1,509	544	670	559	291	257	93	114	95	50
6. End Season stock	833	1,638	711	398	908	143	279	120	66	152
Total	15,893	16,391	15,884	15,684	12,732	2,808	2,788	2,701	2,665	2,163

Source: 1&4 Textile Commissioner's Organization (T.C.O.)

2 PCGA for the year 2011-12- & from 2012-13 to 2015-16 Provincial Agri department.

3& 5 Pakistan Bureau of Statistics.

Note For exports and imports data covers (July-June.)

* Provisional

Special Edition for 75th Plenary Meeting of ICAC

8- IMPORTS OF RAW COTTON - COUNTRY-WISE

COUNTRY	11 - 12	12 - 13	13 - 14	14 - 15	15 - 16*	11 - 12	12 - 13	13 - 14	14 - 15	15 - 16*
1	2	3	4	5	6	7	8	9	10	11
	(bales)					(metric tons)				
Afghanistan	53,335	289,929	210,159	176,047	180,524	9,067	49,288	35,727	29,928	30,689
Australia	61,859	74,906	63,665	28,712	6,812	10,516	12,734	10,823	4,881	1,158
Brazil	185,018	280,206	41,206	96,371	226,929	31,453	47,635	7,005	16,383	38,578
Cameroon	1,712	-	-	-	471	291	-	-	-	80
China	882	-	-	1,176	671	150	-	-	200	114
Egypt	80,065	43,424	5,771	20,824	16,359	13,611	7,382	981	3,540	2,781
Germany	-	-	-	-	-	-	-	-	-	-
Greece	34,612	116,671	23,918	11,394	-	5,884	19,834	4,066	1,937	-
India	339,741	1,037,359	911,288	207,371	1,197,747	57,756	176,351	154,919	35,253	203,617
Iran	-	588	-	-	-	-	100	-	-	-
Mali	6,782	2,918	6,147	3,553	600	1,153	496	1,045	604	102
Nigeria	7,129	94,765	18,753	10,900	4,776	1,212	16,110	3,188	1,853	812
Sudan	-	-	1,200	-	-	-	-	204	-	-
Switzerland	-	-	118	-	-	-	-	20	-	-
Syria	-	-	-	-	-	-	-	-	-	-
Tanzania	5,229	16,494	-	-	3,847	889	2,804	-	-	654
U.K.	1,153	2,441	6	147	6	196	415	1	25	1
U.S.A.	186,112	495,447	198,165	182,806	108,541	31,639	84,226	33,688	31,077	18,452
U.S.S.R.(CIS)	20,729	21,335	29,735	22,582	62,388	3,524	3,627	5,055	3,839	10,606
Others	30,465	51,488	56,018	147,065	102,876	5,179	8,753	9,523	25,001	17,489
Total	1,014,824	2,527,971	1,566,147	908,947	1,912,547	172,520	429,755	266,245	154,521	325,133

Source:- Pakistan Bureau Of Statistics.

*Break-up available July,2015-March,2016

Special Edition for 75th Plenary Meeting of ICAC

9- COTTON YARN PRODUCTION AND DISPOSAL

DESCRIPTION	11 - 12	12 - 13	13 - 14	14 - 15	15 - 16*	11 - 12	12 - 13	13 - 14	14 - 15	15 - 16*
1	2	3	4	5	6	7	8	9	10	11
	(bale of 400lbs.or 181kgs.)					(metric tons)				
Production	16,338,016	17,382,467	18,371,897	18,572,092	9,421,022**	2,964,350	3,153,854	3,333,375	3,369,698	1,709,339**
Mill Consumption	590,089	599,817	613,132	625,379	315,814**	107,065	108,830	111,246	113,468	57,301**
Surplus Yarn	15,747,927	16,782,650	17,758,765	17,946,713	9,105,208**	2,857,285	3,045,024	3,222,129	3,256,230	1,652,038**
Exports	3,325,953	41,122,020	3,036,682	3,699,870	1,588,831	603,457	746,080	663,400	671,300	288,276
Domestic Non- mill Consumption	12,421,974	12,670,630	14,722,083	14,246,843	7,516,377**	2,253,828	2,298,944	2,558,729	2,584,930	1,363,762**

Source:- (i)Textile Commissioner's Organization.

(ii) Pakistan Bureau Of Statistics.

Export Aug,2015- March,2015

* Provisional

** (Jul-Dec) 2015-16

Special Edition for 75th Plenary Meeting of ICAC

10- YARN PRODUCTION (Count- Wise)

YEAR	11 - 12	12 - 13	13 - 14	14 - 15	15 - 16*
Reporting Mills	418	418	433	464	426
1	2	3	4	5	6

(metric tons)

Coarse-Count

1-9s	105,146	106,514	116,415	105,048	52,978
10s	104,026	106,402	111,402	153,342	77,357
12s	55,455	60,545	110,545	90,667	45,739
14s	26,994	29,948	71,182	53,901	27,192
16s	104,267	107,624	112,624	137,370	69,300
18s	34,794	39,494	39,694	61,388	30,969
20s	189,214	209,412	166,421	159,273	80,349
Sub- Total	619,896	659,939	728,283	760,989	383,884

Medium-Count

21s	121,988	191,288	206,288	272,608	137,322
24s	73,003	78,300	92,300	89,089	44,877
28s	52,432	82,434	88,434	73,993	37,273
30s	192,119	178,316	193,316	186,423	93,908
32s	77,812	78,712	92,712	90,217	45,446
34s	29,517	35,917	47,759	32,914	16,580
Sub- Total	546,871	644,967	720,809	745,244	375,406

Fine Count

36s	20,528	50,228	71,070	70,070	35,180
40s	147,177	177,417	192,417	190,714	95,751
47s	70,591	190,159	205,159	165,519	83,101
Sub- Total	338,296	417,804	468,646	426,303	214,032

Super Fine Count

48s	12,743	12,347	25,961	33,122	16,670
60s	26,897	24,787	53,400	53,004	26,676
80s	26,847	24,687	33,301	27,617	13,899
Sub- Total	66,487	61,821	112,662	113,743	57,245

Poly/ Viscose	157,943	347,296	361,600	365,900	184,455
Poly/Cotton	642,846	471,206	647,390	650,039	327,693
Sub- Total	800,789	818,502	1,008,990	1,015,939	512,148

Mixed and Hard Waste	32,059	32,063	36,360	56,630	28,537
Non Listed	559,950	434,602	257,625	250,850	127,400

Total	2,964,350	3,153,854	3,333,375	3,369,698	1,698,652
--------------	------------------	------------------	------------------	------------------	------------------

Source:- (i) Textile Commissioner's Organization

* Provisional (July-Dec) 2015-16

Number of mills working = 411 (including nonlisted)

Special Edition for 75th Plenary Meeting of ICAC

11- CLOTH PRODUCTION

(Mill Sector, Grade-Wise)

GRADE	11 - 12	12 - 13	13 - 14	14 - 15	15 - 16*	11 - 12	12 - 13	13 - 14	14 - 15	15 - 16*
1	2	3	4	5	6	7	8	9	10	11
	('000' Sq.yards)					('000' Sq.meters)				
PAKISTAN	1,225,044	1,230,832	1,239,209	1,240,223	586,958	1,024,259	1,029,098	1,036,102	1,036,950	490,755
F	Total	231,574	232,427	236,188	236,260	219,218	193,619	194,332	197,477	183,288
I	Grey	-	-	-	-	157,130	-	-	-	131,376
	Bleached	-	-	-	-	20,298	-	-	-	16,971
N	Dyed &	-	-	-	-	41,790	-	-	-	34,941
E	Printed	-	-	-	-	-	-	-	-	-
M	Total	414,282	415,043	410,884	416,625	210,542	346,381	347,017	343,540	176,034
E	Grey	-	-	-	-	73,728	-	-	-	61,644
D	Bleached	-	-	-	-	33,660	-	-	-	28,143
I	Dyed &	-	-	-	-	103,154	-	-	-	86,247
U	Printed	-	-	-	-	-	-	-	-	-
M	Total	221,048	222,075	223,182	224,824	98,772	184,818	185,677	186,602	187,975
O	Grey	-	-	-	-	70,037	-	-	-	58,558
A	Bleached	-	-	-	-	17,676	-	-	-	14,779
R	Dyed &	-	-	-	-	11,058	-	-	-	9,246
S	Printed	-	-	-	-	-	-	-	-	-
E	Total	358,140	361,287	368,955	362,514	58,426	299,441	302,072	308,483	303,098
S	Grey	-	-	-	-	41,879	-	-	-	35,015
U	Bleached	-	-	-	-	5,410	-	-	-	4,523
P	Dyed &	-	-	-	-	11,137	-	-	-	9,312
E	Printed	-	-	-	-	-	-	-	-	-
R	Total	74,563	74,410	78,686	92,081	35,949	62,342	62,214	65,789	76,989
F	Total	74,563	74,410	78,686	92,081	35,949	62,342	62,214	65,789	76,989
I	Total	74,563	74,410	78,686	92,081	35,949	62,342	62,214	65,789	76,989
N	Total	74,563	74,410	78,686	92,081	35,949	62,342	62,214	65,789	76,989
E	Total	74,563	74,410	78,686	92,081	35,949	62,342	62,214	65,789	76,989

Source:- Textile Commissioner's Organization.

* Provisional (July-Dec) 2015-16

Special Edition for 75th Plenary Meeting of ICAC

12- COTTON TEXTILES STATISTICS

SEASON	No. of working mills at the end of the period	Installed capacity at the end of the period			working at the end of the period			Spindles hours worked during the period million	Rotors hours worked during the period million
		No. of Spindles ('000)	No. of Rotors ('000)	No. of Looms ('000)	No. of Spindles ('000)	No. of Rotors ('000)	No. of Looms ('000)		
1995-96	356	8,130	141	10	6,325	79	5	53,574	658
1996-97	360	8,293	144	10	6,611	87	5	54,288	723
1997-98	355	8,330	157	10	6,565	75	4	56,160	675
1998-99	351	8,403	146	10	6,653	67	4	56,416	562
1999-00	357	8,516	150	10	6,883	66	4	58,412	572
2000-01	358	8,683	145	10	7,056	64	4	59,958	585
2001-02	360	9,131	142	10	7,533	67	5	62,558	555
2002-03	363	9,290	148	10	7,725	70	5	67,773	583
2003-04	367	9,727	151	10	8,194	69	5	70,401	549
2004-05	423	10,092	156	9	8,642	80	4	72,513	534
2005-06	437	10,454	155	9	9,438	76	4	75,247	511
2006-07	427	10,514	158	8	9,416	76	4	76,883	504
2007-08	418	11,834	196	8	9,960	116	4	76,000	514
2008-09	418	11,366	196	8	9,968	112	4	75,325	511
2009-10	439	11,392	195	7	10,632	140	5	74,654	483
2010-11	433	11,762	196	7	10,757	143	5	76,835	481
2011-12	433	11,762	197	7	10,661	139	5	76,932	480
2012-13	447	11,946	214	8	10,872	150	5	76,757	492
2013-14	411	13,269	201	8	10,999	140	6	78,207	495
2014-15	408	13,269	-	8	11,083	-	6	78,500	-
2015-16*	411	13,184	185	8	10,170	108	5	6,559	41

Source:- Textile Commissioner's Organization.

*Provisional (July-Dec) 2015-16

Special Edition for 75th Plenary Meeting of ICAC

12- COTTON TEXTILES STATISTICS

SEASON	Looms Hours worked during the period (million)	Consumption of Cotton during the period		Production of Cotton Yarn during the period		Surplus Cotton Yarn during the period		Total Production of cloth during the period	
		(000 lbs)	(000 kgs.)	(000 lbs)	(000 kgs.)	(000 lbs)	(000 kgs.)	(000Sq. yards)	(000Sq. meters)
		12	13	14	15	16	17	18	19
1995-96	37	3,363,843	1,525,829	2,821,630	1,279,883	2,748,116	1,246,537	400,591	334,935
1996-97	37	3,202,148	1,452,485	2,735,020	1,240,597	2,629,843	1,192,889	400,864	335,162
1997-98	37	3,229,188	1,464,750	2,601,212	1,179,902	2,479,966	1,124,905	383,964	321,033
1998-99	35	3,192,442	1,448,082	2,568,341	1,164,992	2,443,100	1,108,183	472,975	395,454
1999-00	34	3,539,069	1,605,311	2,863,824	1,299,022	2,718,545	1,233,124	536,962	448,955
2000-01	35	3,703,417	1,679,859	2,953,505	1,339,701	2,800,123	1,270,130	596,778	498,966
2001-02	37	3,945,720	1,789,767	3,077,185	1,395,802	2,910,023	1,319,978	675,499	564,784
2002-03	37	4,287,301	1,944,707	3,256,377	1,477,083	3,069,703	1,392,408	717,313	599,745
2003-04	32	4,274,334	1,938,825	3,253,383	1,475,725	3,045,547	1,381,451	853,132	713,303
2004-05	30	4,734,711	2,147,651	3,948,242	1,790,911	3,719,244	1,687,038	1,094,137	914,807
2005-06	24	5,331,265	2,418,246	4,453,967	2,020,306	4,241,558	1,923,958	1,110,948	928,863
2006-07	22	5,617,480	2,548,072	4,473,634	2,029,227	4,243,357	1,924,774	1,211,558	1,012,983
2007-08	22	6,964,772	2,521,170	6,193,566	2,129,383	5,962,083	2,024,383	1,215,633	1,016,390
2008-09	24	5,553,794	2,519,184	4,793,707	2,174,411	4,553,405	2,065,411	1,219,572	1,019,683
2009-10	22	5,295,096	2,401,840	6,351,386	2,880,970	6,121,118	2,776,521	1,207,496	1,009,587
2010-11	23	5,388,430	2,444,176	6,518,940	2,956,972	6,279,102	2,848,182	1,231,495	1,029,652
2011-12	23	5,309,625	2,408,430	6,535,206	2,964,350	6,299,171	2,857,285	1,225,044	1,024,259
2012-13	24	5,514,172	2,501,212	6,952,987	3,153,854	6,713,060	3,045,024	1,230,832	1,029,098
2013-14	24	5,439,343	2,620,800	7,348,759	3,333,375	7,103,506	3,222,129	1,239,209	1,036,102
2014-15	24	6,005,330	2,724,000	7,428,836	3,369,698	7,178,685	3,256,230	1,240,223	1,036,950
2015-16*	2	2,997,383	1,359,604	3,768,409	1,709,339	3,642,083	1,652,038	586,958	490,755

Source:- Textile Commissioner's Organization

*Provisional (July-Dec) 2015-16 Including non-listed mills.

Special Edition for 75th Plenary Meeting of ICAC

13- EXPORTS OF RAW COTTON (Country-Wise)

Quantity											
COUNTRY	11 - 12	12 - 13	13 - 14	14 - 15	15- 16*	11 - 12	12 - 13	13 - 14	14 - 15	15 - 16*	
1	2	3	4	5	6	7	8	9	10	11	
					(bales)						(metric tons)
Bangladesh	161,206	121,624	150,065	126,859	56,388	27,405	20,676	25,511	21,566	9,586	
Belgium	371	-	-	-	-	63	-	-	-	-	
Burma	-	-	-	-	-	-	-	-	-	-	
China	384,512	78,841	93,771	571	582	65,367	13,403	15,941	97	99	
France	571	-	-	-	-	97	-	-	-	-	
Germany	1,594	-	-	-	-	271	-	-	-	-	
Holland	-	-	-	-	-	-	-	-	-	-	
Hong kong	4,529	-	-	-	-	770	-	-	-	-	
India	225,524	51,465	72,971	136,324	77,406	38,339	8,749	12,405	23,175	13,159	
Indonesia	234,429	83,976	155,441	165,065	55,165	39,853	14,276	26,425	28,061	9,378	
Italy	88	-	-	-	-	15	-	-	-	-	
Japan	-	-	-	-	-	-	-	-	-	-	
Korea	-	-	-	-	-	-	-	-	-	-	
*Malaysia	18,647	-	-	-	-	3,170	-	-	-	-	
Singapore	-	-	-	-	-	-	-	-	-	-	
Spain	494	-	-	-	-	84	-	-	-	-	
Srilanka	-	-	53	-	-	-	-	9	-	-	
Switzerland	-	-	-	-	-	-	-	-	-	-	
Thailnad	104,988	17,553	26,465	34,629	20,547	17,848	2,984	4,499	5,887	3,493	
U.K	288	59	-	-	-	49	10	-	-	-	
Vietnam	269,688	122,135	91,794	59,006	70,665	45,847	20,763	15,605	10,031	12,013	
Others	102,135	68,688	83,976	30,924	4,618	17,363	11,677	14,276	5,257	785	
Total	1,509,065	544,341	674,535	553,376	285,371	256,541	92,538	114,671	94,074	48,513	

Source:- Pakistan Bureau Of Statistics.

*Break-up available July,2015-March,2016

Special Edition for 75th Plenary Meeting of ICAC

13- EXPORTS OF RAW COTTON (Country-Wise) Value

COUNTRY	11 - 12	12 - 13	13 - 14	14 - 15	15 - 16*
1	2	3	4	5	6
('000' rupees)					
Bangladesh	4,497,064	3,547,586	4,908,679	3,482,890	1,559,875
Belgium	12,481	-	-	-	-
Burma	-	-	-	-	-
China	11,217,791	2,053,534	3,123,942	15,584	15,764
France	13,558	-	-	-	-
Germany	42,404	-	-	-	-
Holland	-	-	-	-	-
Hong kong	133,780	-	-	-	-
India	5,190,535	1,317,582	2,248,933	3,736,553	2,112,797
Indonesia	6,391,628	2,351,680	4,972,367	4,375,267	1,512,163
Italy	4,049	-	-	-	-
Japan	-	-	-	-	-
Korea	-	-	-	-	-
Malaysia	524,401	-	-	-	-
Singapore	-	-	-	-	-
Spain	12,737	-	-	-	-
Srilanka	-	-	2,067	-	-
Switzerland	-	-	-	-	-
Thailand	2,724,343	497,715	869,731	928,160	536,330
U.K	6,807	728	-	-	-
Vietnam	7,997,306	3,392,293	2,992,549	1,613,769	1,957,934
Others	2,623,710	1,726,985	2,234,267	780,489	116,550
Total	41,392,594	14,888,103	21,352,535	14,932,712	7,811,413

Source:- Pakistan Bureau Of Statistics.

*Break-up available July,2015-March,2016

Special Edition for 75th Plenary Meeting of ICAC

14- EXPORTS OF COTTON WASTE (Country -wise)

COUNTRY	Quantity									
	11 - 12	12 - 13	13 - 14	14 - 15	15 - 16*	11 - 12	12 - 13	13 - 14	14 - 15	15 - 16*
1	2	3	4	5	6	7	8	9	10	11
(bales)					(metric tons)					
Asian Countries	22,147	27,247	17,600	27,671	5,682	3,765	4,632	2,992	4,704	966
(not specified)										
Belgium	24,324	21,265	7,959	7,747	4,876	4,135	3,615	1,353	1,317	829
France	15,971	29,876	46,200	28,088	29,459	2,715	5,079	7,854	4,775	5,008
Germany	5,700	7,953	8,959	13,176	10,953	969	1,352	1,523	2,240	1,862
Holland	3,529	7,612	5,171	5,053	3,106	600	1,294	879	859	528
Hong Kong	4,606	4,435	4,193	3,000	1,259	783	754	713	510	214
Italy	9,735	14,512	21,776	14,094	27,394	1,655	2,467	3,702	2,396	4,657
Japan	35	147	-	147	-	6	25	-	25	-
Korea	3,147	3,624	9,929	3,265	2,529	535	616	1,688	555	430
Persian Gulf	2,760	3,895	3,566	4306	2036	469	662	606	732	346
Saudi Arabia	465	335	406	641	76	79	57	69	109	13
*Singapore	53	506	6	94	82	9	86	1	16	14
Spain	1,441	1,347	735	865	341	245	229	125	147	58
Srilanka	-	-	112	35	106	-	-	19	6	18
Thailand	4,259	4,624	8,018	6,600	3,118	724	786	1,363	1,122	530
U.K	9,247	1,400	4,341	1,659	706	1,572	238	738	282	120
U.S.A.	1,194	5,218	6,741	1,218	24	203	887	1,146	207	4
Others	48677	65517	62812	41859	20425	8275	11138	10,678	7,116	3,472
Total	157,290	199,513	208,524	159,518	112,172	26,739	33,917	35,449	27,118	19,069

Source:- Pakistan Bureau Of Statistics.

*Break-up available August,2015-March,2016

Special Edition for 75th Plenary Meeting of ICAC

14- EXPORTS OF COTTON WASTE (Country -wise)

COUNTRY	Value				
	11 - 12	12 - 13	13 - 14	14 - 15	15 - 16*
	12	13	14	15	16
('000' rupees)					
Asian Countries	496,176	552,458	356,253	483,614	89,219
(not specified)					
Belgium	589,251	452,149	150,974	139,907	80,001
France	379,033	694,961	996,273	512,586	495,389
Germany	147,803	184,071	225,795	249,382	197,463
Holland	124,483	252,998	176,346	138,604	72,396
Hong Kong	102,930	98,300	77,603	56,797	16,998
Italy	256,591	269,010	526,783	288,184	481,801
Japan	2,308	1,230	-	2,642	-
Korea	21,985	46,917	79,274	69,130	40,569
Persian Gulf	48,982	47,544	38,508	77774	24888
Saudi Arabia	7,405	4,047	5,237	10,419	1,355
Singapore	480	6,491	123	1,035	1,144
Spain	30,948	21,756	23,300	8,747	6,765
Srilanka	-	-	3,811	1,198	1,223
Thailand	101,027	99,141	176,507	118,023	51,060
U.K	172,871	37,242	130,126	34,027	12,038
U.S.A.	32,361	74,988	197,899	29,594	410
Others	1049441	1078173	1183455	780969	344500
Total	3,564,075	3,921,476	4,348,267	3,002,632	1,917,219

Source:- Pakistan Bureau Of Statistics

* Break-up available form Augut,2015- March,2016

Special Edition for 75th Plenary Meeting of ICAC

15- EXPORTS OF COTTON YARN (Country -wise)

COUNTRY	Quantity									
	11 - 12	12 - 13	13 - 14	14 - 15	15 - 16*	11 - 12	12 - 13	13 - 14	14 - 15	15 - 16*
1	2	3	4	5	6	7	8	9	10	11
	(bale of 400lbs. Or 181 kgs.)					(metric tons)				
Asian Countries	46,857	41,223	34,138	36,347	14,345	8,502	7,479	6,194	6,595	2,603
Australia	2,233	1,970	986	1,203	551	405	357	179	218	100
Bangladesh	147,171	183,892	206,882	195,505	129,677	26,703	33,365	37,536	35,472	23,528
Belgium	13,825	13,991	14,126	12,573	6,581	2,508	2,539	2,563	2,281	1,194
Canada	2,933	1,266	2,608	1,659	1,557	532	230	473	301	283
China	2,201,576	3,006,405	2,452,179	2,524,127	1,039,739	399,451	545,479	444,920	457,975	188,649
Egypt	25,338	13,953	23,904	31,997	6,109	4,597	2,532	4,337	5,805	1,108
France	2,079	777	894	1,822	356	377	141	162	331	65
Germany	10,334	10,641	11,999	10,748	7,648	1,875	1,931	2,177	1,950	1,388
Holland	7,533	6,152	4,684	4,351	2,854	1,367	1,116	850	789	518
Hong Kong	327,712	304,279	239,121	195,758	82,847	59,460	55,208	43,386	35,518	15,032
Hungary	43	-	228	1	77	8	-	41	-	14
Indonesia	3,259	1,278	1,355	7,229	7,549	591	232	246	1,312	1,370
Italy	25,343	26,957	31,723	21,537	18,257	4,598	4,891	5,756	3,908	3,313
Japan	94,558	71,814	55,558	53,549	38,319	17,156	13,030	10,080	9,716	6,953
Korea	95,614	93,225	83,978	73,477	37,907	17,348	16,915	15,237	13,332	6,878
Malaysia	22,120	21,990	21,811	18,446	6,648	4,013	3,990	3,957	3,347	1,206
Mauritius	9,791	7,031	11,176	10,737	3,355	1,776	1,276	2,028	1,948	609
New Zealand	616	513	1,220	1,194	714	112	93	221	217	130
Persian Gulf	28,667	28,040	31,929	22,735	13,979	5,201	5,088	5,793	4,125	2,536
Philippines	11,529	8,708	7,026	7,317	2,815	2,092	1,580	1,275	1,328	511
Portugal	54,159	59,749	79,612	55,996	41,780	9,827	10,841	14,445	10,160	7,581
Saudi Arabia	1,615	269	1,216	1,163	699	293	49	221	211	127
Singapore	16	-	140	27	20	3	-	25	5	4
Spain	8,923	7,651	10,415	9,784	4,405	1,619	1,388	1,890	1,775	799
Sri Lanka	8,742	11,033	5,785	6,954	1,719	1,586	2,002	1,050	1,262	312
Sweden	-	17	13	1	15	-	3	2	-	3
Switzerland	84	3	2	1	-	15	1	-	-	-
Thailand	19,350	6,941	7,849	8,434	2,315	3,511	1,259	1,424	1,530	420
Turkey	38,860	62,998	93,291	79,042	51,233	7,051	11,430	16,927	14,341	9,296
U. K.	4,294	2,981	3,203	2,570	2,213	779	541	581	466	402
U.S.A.	36,390	25,203	24,105	27,415	18,584	6,603	4,573	4,374	4,974	3,372
Others	74,389	91,070	75,972	76,274	43,964	13,497	16,524	13,784	13,839	7,977
Total	3,325,953	4,112,020	3,539,128	3,499,973	1,588,831	603,457	746,080	642,134	635,031	288,276

Source: - Pakistan Bureau of Statistics.

*Break-up available from August,2015- March,2016

Special Edition for 75th Plenary Meeting of ICAC

15- EXPORTS OF COTTON YARN (Country -wise)

COUNTRY	Value				
	11 - 12	12 - 13	13 - 14	14 - 15	15 - 16*
	12	13	14	15	16
('000' rupees)					
Asian Countries	2,244,375	2,209,318	1,884,112	1,922,750	784,089
Australia	130,759	127,146	74,295	76,511	32,770
Bangladesh	8,594,125	11,135,851	12,551,107	11,170,783	7,349,023
Belgium	907,799	977,868	933,788	763,505	444,098
Canada	182,522	81,442	153,409	97,158	87,291
China	104,546,866	154,656,340	130,186,459	129,410,880	59,983,171
Egypt	1,342,183	906,511	1,526,450	1,878,590	326,941
France	171,345	57,344	59,966	122,765	26,524
Germany	665,804	735,208	868,559	687,680	462,882
Holland	569,156	449,155	322,815	233,466	140,929
Hong Kong	16,965,540	17,188,225	13,833,335	10,767,782	4,196,209
Hungary	2,496	-	23,366	90	6,927
Indonesia	163,609	68,293	91,381	385,356	390,906
Italy	1,912,203	2,030,951	2,515,253	1,505,598	1,146,863
Japan	5,267,306	4,130,278	3,529,295	2,973,858	1,880,596
Korea	5,216,471	5,810,973	5,514,394	4,568,818	2,230,334
Malaysia	1,222,022	1,336,357	1,478,399	1,151,457	330,947
Mauritius	651,413	526,180	898,039	739,089	231,807
New Zealand	33,077	32,342	76,620	67,646	37,443
Persian Gulf	1,633,831	1,882,678	2,229,427	1,326,831	795,168
Philippines	583,567	484,125	410,406	351,751	137,493
Portugal	3,354,693	4,097,735	5,395,247	3,488,833	2,535,981
Saudi Arabia	127,755	18,771	99,822	90,889	44,683
Singapore	265	-	10,872	2,061	2,452
Spain	582,125	566,308	764,346	640,400	299,013
Sri Lanka	604,549	790,869	439,418	480,319	106,596
Sweden	-	797	755	78	740
Switzerland	3,034	510	105	73	-
Thailand	918,001	386,410	427,174	388,001	116,957
Turkey	2,311,475	3,873,542	5,517,756	4,308,633	2,778,726
U. K.	294,347	205,235	202,966	154,887	127,624
U.S.A.	2,208,129	1,615,577	1,589,590	1,767,910	1,144,862
Others	4,520,450	5,581,953	4,920,803	4,633,526	2,483,442
Total	167,931,292	221,964,292	198,529,729	186,157,974	90,663,487

Source:- Pakistan Bureau of Statistics.

*Break-up available from August,2015- March,2016

Special Edition for 75th Plenary Meeting of ICAC

16- EXPORTS OF COTTON CLOTH (Country -wise)

Quantity

COUNTRY	11 - 12	12 - 13	13 - 14	14 - 15	15 - 16*	11 - 12	12 - 13	13 - 14	14 - 15	15 - 16*
1	2	3	4	5	6	7	8	9	10	11
	(bale of 1254 Sq.meters)					('000' Sq.meters)				
Africa South	11,336	10,154	11,934	10,203	7,529	14,217	12,735	14,967	12,796	9,442
Australia	5,256	3,571	5,219	3,327	2,296	6,592	4,479	6,545	4,173	2,880
Bangladesh	26,250	23,485	21,291	34,848	29,411	32,921	29,454	26,702	43,705	36,886
Belgium	16,925	19,554	25,450	21,252	14,516	21,226	24,524	31,918	26,653	18,205
Canada	1,330	1,421	773	1,024	362	1,668	1,782	969	1,284	454
China	71,010	76,164	99,658	69,094	30,532	89,057	95,521	124,986	86,654	38,292
Cyprus	270	110	68	106	57	339	138	85	133	71
Denmark	548	377	248	397	165	687	473	311	498	207
France	934	1,191	642	789	641	1,171	1,494	805	990	804
Germany	27,736	31,822	40,943	39,633	24,084	34,785	39,910	51,349	49,706	30,205
Holland	8,198	12,182	16,145	12,919	10,631	10,282	15,278	20,248	16,202	13,333
Hong Kong	4,116	4,372	2,722	4,990	2,376	5,162	5,483	3,414	6,258	2,980
Hungary	2,300	1,646	2,824	2,489	1,446	2,885	2,064	3,542	3,122	1,814
Indonesia	2,099	2,690	1,127	3,293	2,283	2,632	3,374	1,413	4,130	2,863
Italy	38,820	50,027	67,190	56,008	41,611	48,686	62,741	84,266	70,242	52,186
Japan	8,321	7,498	6,786	11,680	8,084	10,436	9,404	8,511	14,648	10,139
Korea	27,976	27,174	41,269	38,119	20,169	35,086	34,080	51,758	47,807	25,295
Malaysia	1,809	779	739	1,485	578	2,269	977	927	1,862	725
Mauritius	157	246	442	588	2	197	309	554	737	3
New Zealand	614	586	774	590	271	770	735	971	740	340
Persian Gulf	9,168	7,461	12,009	10,146	5,791	11,498	9,357	15,061	12,725	7263
Poland	3,930	5,102	6,882	7,570	5,958	4,929	6,399	8,631	9,494	7,472
Saudi Arabia	749	626	566	433	178	939	785	710	543	223
Singapore	79	75	489	445	120	99	94	613	558	150
Spain	18,741	17,614	19,874	18,402	15,337	23,504	22,091	24,925	23,079	19,235
Sri Lanka	11,108	9,979	4,601	9,006	6,710	13,931	12,515	5,770	11,295	8,415
Sweden	798	665	692	639	272	1,001	834	868	801	341
Switzerland	-	1	4	11	-	-	1	5	14	-
Turkey	27,082	21,298	29,842	15,608	8,531	33,965	26,711	37,426	19,575	10,699
U. K.	10,436	9,216	10,596	11,010	6,979	13,088	11,558	13,289	13,808	8,753
U.S.A.	44,666	30,950	29,460	30,389	19,103	56,018	38,816	36,947	38,112	23,958
Others	112,660	117,821	125,394	100,958	72,662	141,293	147,765	157,263	126,616	91,129
Total	495,422	495,857	586,653	517,451	338,685	621,334	621,879	735,751	648,961	424,762

Source:- Pakistan Bureau of Statistics.

*Break-up available from August,2015- March,2016

Special Edition for 75th Plenary Meeting of ICAC

16- EXPORTS OF COTTON CLOTH (Country -wise)

COUNTRY	Value				
	11 - 12	12 - 13	13 - 14	14 - 15	15 - 16*
	12	13	14	15	16
	('000' rupees)				
Africa South	1,426,672	1,365,874	1,494,625	1,360,801	999,030
Australia	648,806	502,313	669,823	477,200	303,505
Bangladesh	3,543,268	3,872,904	3,553,147	4,996,463	3,842,729
Belgium	2,136,316	2,798,113	3,327,029	2,654,322	1,838,927
Canada	177,852	189,364	114,831	135,986	48,690
China	8,628,411	10,550,877	10,968,097	8,425,055	3,622,394
Cyprus	20,897	13,700	9,936	12,531	8,802
Denmark	72,495	50,707	36,204	47,910	26,157
France	115,954	164,956	85,811	104,264	83,844
Germany	3,880,165	4,337,416	5,436,961	5,244,497	3,117,036
Holland	1,109,212	1,676,974	2,080,074	1,798,133	1,429,328
Hong Kong	567,967	535,372	385,241	643,734	321,872
Hungary	293,813	257,897	425,742	362,247	209,448
Indonesia	255,908	409,476	190,951	438,109	311,333
Italy	5,152,617	6,774,101	9,181,073	7,583,570	5,479,888
Japan	1,013,997	922,071	865,123	1,431,737	1,066,660
Korea	3,431,725	3,505,759	4,625,923	4,382,421	2,100,422
Malaysia	235,216	115,258	109,839	227,036	92,462
Mauritius	18,392	30,812	62,025	85,044	539
New Zealand	75,164	81,444	87,079	76,223	36,551
Persian Gulf	1,133,924	1,072,717	1,701,247	1,409,169	787002
Poland	475,124	727,978	952,315	1,033,417	798,492
Saudi Arabia	84,859	84,202	58,013	60,106	26,302
Singapore	7,157	10,752	64,201	73,128	21,658
Spain	2,487,121	2,451,769	2,614,674	2,458,553	1,984,738
Sri Lanka	1,557,543	1,422,892	682,441	1,266,985	951,384
Sweden	102,096	78,613	93,945	77,595	42,274
Switzerland	-	96	344	1,562	-
Turkey	3,330,804	2,842,028	3,450,862	1,918,456	1,038,591
U. K.	1,308,723	1,218,490	1,394,473	1,444,248	953,881
U.S.A.	5,633,489	4,531,216	4,035,277	4,204,279	2,602,740
Others	15,448,262	17,783,973	17,533,625	13,941,708	9,838,217
Total	64,373,949	70,380,114	76,290,951	68,376,489	43,984,896

Source:- Pakistan Bureau of Statistics.

*Break-up available from August,2015- March,2016

Special Edition for 75th Plenary Meeting of ICAC

17- IMPORTS OF SYNTHETIC FIBRES AND YARNS EXCLUDING NYLONS (Country-wise)

COUNTRY	11 - 12	12 - 13	13 - 14	14 - 15	15 - 16*	11 - 12	12 - 13	13 - 14	14 - 15	15 - 16*
1	2	3	4	5	6	7	8	9	10	11
	(' 000' lbs)					(metric tons)				
Asian Countries	584	280	919	1,147	714	265	127	417	520	324
Austria	-	-	-	-	-	-	-	-	-	-
Belgium	-	15	-	-	-	-	7	-	-	-
China	210,120	197,477	265,628	311,127	176,607	95,310	89,575	120,488	141,126	80,108
Germany	251	461	507	570	399	114	209	230	259	181
Hong Kong	119	1,243	106	676	7	54	564	48	307	3
Indonesia	3,838	3,245	1,989	2,930	525	1,741	1,472	902	1,329	238
Italy	53	11	119	26	-	24	5	54	12	-
Japan	838	73	291	386	483	380	33	132	175	219
Korea	450	322	1,246	101	102	204	146	565	46	46
Malaysia	7,319	13,860	13,880	20,330	12,066	3,320	6,287	6,296	9,222	5,473
Singapore	-	20	-	134	-	-	9	-	61	-
Thailand	26,248	12,002	11,911	7,294	3,477	11,906	5,444	5,403	3,308	1,577
U. K.	15	-	20	4	46	7	-	9	2	21
U.S.A.	119	42	218	308	40	54	19	99	139	18
Others	23,722	12,139	13,583	12,615	5,635	10,760	5,506	6,161	5,722	2,556
Total	273,676	241,190	310,417	357,648	200,103	124,139	109,403	140,804	162,228	90,766

Source:- Pakistan Bureau of Statistics.

*Break-up available from August,2015- March,2016

Special Edition for 75th Plenary Meeting of ICAC

18- IMPORTS OF NYLON FIBRES AND YARNS (Country-wise)

COUNTRY	11 - 12	12 - 13	13 - 14	14 - 15	15 - 16*	11 - 12	12 - 13	13 - 14	14 - 15	15 - 16*
1	2	3	4	5	6	7	8	9	10	11
	('000'lbs)					(metric tons)				
Asian Countries	3,029	4,844	4,592	5,734	3,076	1,374	2,197	2,083	2,601	1,395
China	1,323	1,019	952	694	637	600	462	432	315	289
Germany	7	359	29	15	4	3	163	13	7	2
Indonesia	247	190	121	-	-	112	86	55	-	-
Italy	2	7	198	68	99	1	3	90	31	45
Japan	-	-	-	-	-	-	-	-	-	-
Korea	126	152	2	24	4	57	69	1	11	2
Thailand	93	170	34	139	4	42	77	15	63	2
Turkey	-	-	-	4	-	-	-	-	2	-
U. K.	26	-	-	-	-	12	-	-	-	-
U.S.A.	11	49	902	734	392	5	22	409	333	178
Others	187	269	1,038	1,160	785	85	122	471	526	356
Total	5,051	7,057	3,276	8,574	5,002	2,291	3,201	1,486	3,889	2,269

Source:- Pakistan Bureau of Statistics.

*Break-up available from August,2015- March,2016

Special Edition for 75th Plenary Meeting of ICAC

19- YARN PRODUCTION, EXPORTS AND DOMESTIC REQUIREMENT

YEAR	Production	Mill Consumption	Exports*	Available for Local Market
1	2	3	4	5
			(Metric tons)	
1973-74	379,460	96,056	100,564	182,840
1974-75	351,200	88,103	78,365	184,732
1975-76	349,653	83,943	112,182	153,528
1976-77	282,640	65,452	64,294	152,894
1977-78	297,895	55,165	59,955	182,775
1978-79	327,796	51,215	97,929	178,652
1979-80	362,862	47,910	99,834	215,118
1980-81	374,947	43,277	95,232	236,438
1981-82	430,154	42,624	95,621	291,909
1982-83	448,430	50,563	134,100	263,767
1983-84	431,580	34,972	101,805	294,803
1984-85	431,731	53,546	125,855	252,330
1985-86	482,186	46,052	157,895	278,239
1986-87	586,371	36,410	259,668	290,293
1987-88	685,031	41,566	210,950	432,515
1988-89	767,434	38,172	291,953	437,309
1989-90	925,382	47,119	374,976	503,287
1990-91	1,055,228	40,215	501,072	513,941
1991-92	1,188,270	36,022	505,863	646,385
1992-93	1,234,539	35,101	555,294	644,144
1993-94	1,498,948	36,846	578,648	883,454
1994-95	1,413,648	29,111	522,091	862,446
1995-96	1,505,244	30,164	535,889	939,191
1996-97	1,530,855	46,962	508,188	975,705
1997-98	1,540,720	53,445	461,919	1,025,356
1998-99	1,547,632	55,947	421,481	1,070,204
1999-00	1,678,536	65,481	512,971	1,100,084
2000-01	1,729,129	68,275	545,134	1,115,720
2001-02	1,818,345	77,328	540,010	1,201,007
2002-03	1,924,936	80,436	519,329	1,325,171
2003-04	1,938,908	93,141	499,071	1,346,696
2004-05	2,290,304	105,362	504,722	1,680,220
2005-06	2,556,300	95,710	694,526	1,766,064
2006-07	2,039,056	104,423	699,259	1,235,374
2007-08	2,809,383	105,000	554,816	2,149,567
2008-09	2,862,411	109,100	526,527	2,226,784
2009-10	2,880,970	104,449	612,413	2,164,108
2010-11	2,956,972	108,790	531,770	2,316,412
2011-12	2,964,350	107,065	603,457	2,253,828
2012-13	3,153,854	108,830	746,080	2,298,944
2013-14	3,333,375	111,246	663,895	2,558,234
2014-15	3,369,698	113,368	642,052	2,614,178
2015-16*	1,709,339	57,301	423,624	1,228,414

Source:- Textile Commissioner's Organization & Pakistan Bureau Of Statistics.

* Provisional for production & Mill Consumption (July-Dec, 2015)
Exports (July-June)

Special Edition for 75th Plenary Meeting of ICAC

20 SEED COTTON MARKET PRICES DURING 2015-16

(Monthly Averages)

MARKET/ MONTH	Aug.	Sep.	Oct.	Nov.	Dec.	Jan.	Feb.	Mar.	Apr.	May.	Jun.	Jul.	Average
1	2	3	4	5	6	7	8	9	10	11	12	13	14
(rupees per 40 kgs.)													
Hyderabad	2310	2365	2555	2532	2200	-	-	-	-	-	-	-	2392
Khairpur	-	-	2771	2753	2800	2851	-	-	-	-	-	-	2794
Multan	-	-	2933	2726	2648	-	-	-	-	-	-	-	2769
Sahiwal	2378	2254	2608	2593	2294	2367	-	-	-	-	-	-	2416
Rahim Yar Khan	2308	2416	3075	3017	3008	3178	2964	2888	-	-	-	-	2857
Bahawal Pur	-	-	2908	2895	2771	3011	2775	2785	-	-	-	-	2858

Source:- Market Reports.

21 RAW COTTON (LINT) MARKET PRICES DURING 2015-16

(Monthly Averages)

MARKET/ MONTH	Aug.	Sep.	Oct.	Nov.	Dec.	Jan.	Feb.	Mar.	Apr.	May.	Jun.	Jul.	Average
1	2	3	4	5	6	7	8	9	10	11	12	13	14
(rupees per 40 kgs.)													
Hyderabad	4938	4928	4975	4964	4823	-	-	-	-	-	-	-	4926
Khairpur	-	-	5718	5759	5787	5787	-	-	-	-	-	-	5763
Multan	-	-	5816	5784	5628	-	-	-	-	-	-	-	5743
Sahiwal	4995	5038	5716	5890	6109	5680	-	-	-	-	-	-	5571
Rahim Yar Khan	5154	5228	5861	5980	6001	5800	5818	5894	-	-	-	-	5717
Bahawal Pur	-	-	5829	5857	5894	6082	5909	5894	-	-	-	-	5911

Source :- Market Reports.

Special Edition for 75th Plenary Meeting of ICAC

22- SEED COTTON MARKET PRICES - SEASONAL AVERAGE

SEASON/MARKET	Hyderabad	Khairpur	Multan	Rahim Yar Khan	Sahiwal	Bahawalpur
1	2	3	4	5	6	7
(rupees per 40kgs.)						
1992-93	379	-	387	398	-	-
1993-94	385	-	636	589	-	-
1994-95	692	-	852	917	-	-
1995-96	739	-	769	810	-	-
1996-97	823	-	867	919	895	906
1997-98	795	-	872	950	873	914
1998-99	839	-	966	953	980	950
1999-00	553	509	684	657	658	686
2000-01	893	953	867	-	834	897
2001-02	730	773	739	715	745	749
2002-03	866	873	956	-	912	-
2003-04	1159	116	1295	-	1176	-
2004-05	840	795	933	-	900	922
2005-06	1003	1019	1092	-	1069	1062
2006-07	1174	1134	1160	-	1186	1195
2007-08	1473	1405	1424	-	1469	1479
2008-09	1657	1546	1496	-	1603	1616
2009-10	1991	1866	1965	2007	1924	1934
2010-11	3851	3720	4143	4169	4093	4346
2011-12	2334	2142	2482	2701	2560	2738
2012-13	2504	2444	2760	2797	2618	2859
2013-14	2848	2943	3092	3273	3222	2978
2014-15	2412	2159	2629	2601	2369	2472
2015-16	2392	2794	2769	2857	2416	2858

Source :- Market Reports.

August,2015- March,2016

Special Edition for 75th Plenary Meeting of ICAC

**23-KCA'S EX-GIN PRICES OF RAW COTTON AT KARACHI DURING 2015-16
(Monthly Averages)**

MONTH	YEAR	EX-GIN	EX- KARACHI
(rupees per 40 kgs.)			
AUGUST	2015	4880	5025
SEPTEMBER	2015	4991	5136
OCTOBER	2015	5582	5727
NOVEMBER	2015	5698	5730
DECEMBER	2015	5607	5752
JANUARY	2016	5758	5903
FEBRUARY	2016	5726	5871
MARCH	2015	5616	5761
APRIL	2015	5785	5930
MAY	2016	5986	6127
JUNE	2016	5993	6105
JULY	2016	6558	6703
SEASONAL AVERAGE		5682	5814

Source: -The Karachi Cotton Association.

Special Edition for 75th Plenary Meeting of ICAC

24-KCA'S EX-GIN RATES OF RAW COTTON AT KARACHI - SEASONAL AVERAGES

SEASON/ VARIETY	Base Grade3*
1	2
(rupees per 40 kgs.)	
2001-02 (Sept- August)	2220
2002-03 (Sept- August)	2841
2003- 04 (August-July)	3647
2004- 05 (August-July)	2348
2005- 06 (August-July)	2625
2006- 07 (August-July)	2749
2007- 08 (August-July)	3457
2008- 09 (August-July)	3694
2009- 10 (August-July)	5300
2010- 11 (August-July)	9647
2011- 12 (August-July)	6208
2012- 13 (August-July)	6576
2013- 14 (August-July)	7160
2014- 15 (August-July)	5478
2015- 16 (August-July)	5682

Note: From 2nd March,2009 *Base Grade-3 Staple Length changed to 1-1/16" (27mm), Mike 4.6, Fibre Strength 92.5, GOT 36.6 and NLC 3.8 to 4.9.

Source: -The Karachi Cotton Association.

Special Edition for 75th Plenary Meeting of ICAC

25- COTTON YARN PRICES AT KARACHI DURING 2015-16 (Count-Wise)

COUNTS	Aug.	Sep.	Oct.	Nov.	Dec.	Jan.	Feb.	Mar.	Apr.	May.	Jun.	Jul.	Average
1	2	3	4	5	6	7	8	9	10	11	12	13	14
(rupees per bundle of 10lbs. 4.54 kgs./cone)													
10/1	777	777	792	840	840	823	819	811	808	812	816	993	826
16/1	918	921	939	964	968	969	970	965	973	989	999	1145	977
21/1	1028	1026	1034	1062	1056	1057	1057	1056	1058	1065	1072	1207	1065
22/1	1044	1037	1052	1073	1062	1065	1067	1067	1067	1067	1067	1229	1075
26/1	1114	1104	1125	1154	1151	1151	1152	1152	1152	1159	1170	1270	1155
30/1	1243	1241	1242	1269	1256	1256	1255	1254	1256	1265	1272	1370	1265
52/1	1560	1560	1560	1560	1560	1560	1560	1560	1560	1560	1560	1647	1567
60/1	1700	1700	1700	1700	1700	1700	1700	1700	1700	1700	1700	1539	1687
20/2	1114	1114	1130	1169	1158	1158	1158	1158	1158	1158	1158	1464	1175

Source: The Pakistan Yarn Merchants' Association.

Special Edition for 75th Plenary Meeting of ICAC

**26- COTTON YARN PRICES AT KARACHI (Count-Wise)
(Seasonal Averages)**

COUNTS	11 - 12	12 - 13	13 - 14	14 - 15	15 - 16
1	2	3	4	5	6
(rupees per bundle of 10lbs. 4.54 kgs./cone)					
10/1	1000	1076	1069	814	826
16/1	1069	1168	1199	1006	977
21/1	1157	1274	1300	1101	1065
22/1	1154	1254	1297	1116	1075
26/1	1213	1356	1418	1208	1155
30/1	1301	1459	1516	1326	1265
52/1	1572	1570	1725	1604	1567
60/1	1794	1800	1804	1749	1687
20/2	1210	1341	1378	1187	1175

Source: The Pakistan Yarn Merchants' Association.

Special Edition for 75th Plenary Meeting of ICAC

27- PRICES OF COTTON SEED DURING 2015-16 (Monthly Averages)

MARKETS/ MONTHS	Aug.	Sep.	Oct.	Nov.	Dec.	Jan.	Feb.	Mar.	Apr.	May.	Jun.	Jul.	Seasonal Average	Last season's
1	2	3	4	5	6	7	8	9	10	11	12	13	14	(2014-15) Average
(Rs. per 40 kgs.)														
Hyderabad	1203	1109	1391	1436	1286	-	-	-	-	-	-	-	1285	1042
Mirpurkhas	1232	1134	1384	1421	-	-	-	-	-	-	-	-	1293	1031
Khairpur	-	-	1571	1556	1612	1630	-	-	-	-	-	-	1592	1150
Sukkur	-	-	1590	1585	1639	1662	-	-	-	-	-	-	1619	1130
Rahim Yar Khan	1334	1225	1583	1590	1859	1714	1753	1826	-	-	-	-	1611	1184
Bahawalpur	-	-	1583	1567	1601	1887	1714	1831	-	-	-	-	1697	1154
Multan	-	1162	1626	1629	1686	-	-	-	-	-	-	-	1526	1137
Mian Channu	1227	1172	1563	1491	1489	1518	1508	-	-	-	-	-	1424	1026
Sahiwal	1165	1127	1475	1558	1646	1572	-	-	-	-	-	-	1424	1053
Vehari	1065	1132	1449	1365	1442	1569	1600	1608	-	-	-	-	1404	1026
Burewala	1206	1152	1478	1477	1584	1716	1683	1763	-	-	-	-	1507	1053

Source :- Market Reports.
August,2015- March,2016

28- PRICES OF COTTON SEED CAKE DURING 2015-16 (Monthly Average)

(Rs. per 40Kgs)

Months/ Markets	Hyderabad	Multan
August, 2015	-	-
Sep,15	1141	-
Oct,15	1416	1601
Nov,15	1458	1639
Dec,15	1602	1703
Jan,2016	1671	1764
Feb,16	-	1763
Mar,16	-	1824
Apr,16	-	-
May,16	-	-
June,16	-	-
July,16	1630	1802
Seasonal Average	1486	1728
Last Season (2014-15) Average	1089	1184

Source :- Market Reports.

Special Edition for 75th Plenary Meeting of ICAC

**29 EXPORTS OF COTTON AND COTTON MANUFACTURES
FOR JULY- JUNE PERIOD**

Commodities	Unit	2011-12	2012-13	2013-14	2014-15	2015-16
RAW Cotton	Quantity Tons	256,541	92,538	114,671	94,074	49,315
	Value ' 000' \$	462,247	153,929	205,136	147,060	76,631
Cotton Waste	Quantity Tons	56,654	66,606	69,243	44,390	43,500
	Value ' 000' \$	71,809	81,132	79,122	51,050	44,148
Cotton Yarn	Quantity Tons	575,842	737,586	663,895	642,052	423,624
	Value ' 000' \$	1,809,798	2,252,952	1,997,338	1,849,389	1,264,922
Cotton Cloth	000' Sq. meters	2,066,558	2,160,763	2,520,516	2,074,177	2,152,132
	Value ' 000' \$	2,442,483	2,689,832	2,769,986	2,452,632	2,213,859
Tents & Canvas	Quantity Tons	28,725	32,964	28,541	45,037	32,354
	Value ' 000' \$	92,074	117,463	77,759	126,575	85,083
Cotton Bags	Quantity Tons	8,360	7,868	6,392	6,676	6,714
	Value ' 000' \$	15,336	13,905	11,677	13,138	12,569
Bed sheets	Quantity Tons	248,788	263,572	324,551	316,735	328,857
	Value ' 000' \$	1,741,650	1,785,417	2,103,071	2,137,744	2,019,918
Towels	Quantity Tons	145,876	170,114	166,567	172,156	184,479
	Value ' 000' \$	686,376	769,591	767,461	797,155	802,966
Garments	Value ' 000' \$	1,615,590	1,799,591	1,909,323	2,095,089	2,195,216
Hosiery	Value ' 000' \$	1,982,765	2,042,958	2,293,661	2,406,488	2,363,622
Other Made-ups	Value ' 000' \$	591,454	598,640	659,929	654,926	628,256
Total	Value ' 000' \$	11,511,582	12,305,410	12,874,463	12,731,246	11,707,190
Overall Exports	Value ' 000' \$	23,624,256	24,460,456	25,109,639	23,667,294	20,786,510
Cotton & Its Manuf.						
AS % of Total Expt.	%	48.73	50.31	51.27	53.79	56.32

Source:- Pakistan Bureau Of Statistics.
July,2015 June,2016

Special Edition for 75th Plenary Meeting of ICAC

WORLD COTTON STATISTICS

COTISTICS (Vol. 45) Directorate of Marketing & Economic Research, PCCC Multan

Special Edition for 75th Plenary Meeting of ICAC

30-MAJOR COTTON PRODUCING AND CONSUMING COUNTRIES

YEARS	Area (' 000' hectares)	Production (' 000' M.tons)	Yield (kgs./ hac.)	Consumption (' 000' M.tons)
1	2	3	4	5
CHINA				
2011-12	5528	7400	1339	8635
2012-13	4975	7300	1467	8290
2013-14	4700	6929	1474	7517
2014-15	4310	6480	1503	7705
2015-16*	3103	4820	1553	7330
USA				
2011-12	3829	3391	886	718
2012-13	3793	3770	994	751
2013-14	3053	2811	921	773
2014-15	3929	3553	904	801
2015-16*	3268	2806	859	773
INDIA				
2011-12	12178	6345	521	3700
2012-13	11980	6205	518	4817
2013-14	11650	6770	581	4939
2014-15	12250	6507	531	6269
2015-16*	11881	5749	484	5230
PAKISTAN**				
2011-12	2861	2311	815	2408
2012-13	2879	2515	770	2416
2013-14	2914	2076	712	2476
2014-15	2840	2305	812	2528
2015-16*	2969	1514	528	2193
UZBEKISTAN				
2011-12	1316	880	669	295
2012-13	1285	1000	778	325
2013-14	1275	940	737	345
2014-15	1275	940	737	345
2015-16*	1298	832	641	338
TURKEY				
2011-12	542	750	1384	1300
2012-13	488	745	1527	1360
2013-14	451	760	1686	1400
2014-15	468	847	1809	1372
2015-16*	424	660	1557	1470
AUSTRALIA				
2011-12	600	1080	1996	8
2012-13	442	1002	2138	8
2013-14	392	890	2270	8
2014-15	210	500	3381	7
2015-16*	270	579	2144	7
BRAZIL				
2011-12	1393	1877	1347	888
2012-13	894	1310	1465	890
2013-14	1122	1734	1546	862
2014-15	976	1506	1543	808
2015-16*	958	1389	1449	757
GREECE				
2011-12	300	280	933	25
2012-13	279	248	930	21
2013-14	249	296	1190	20
2014-15	271	273	1007	20
2015-16*	240	218	908	20

Sources:- Cotton This Month August,2016

*Estimates.

**Pakistan Central Cotton Committee.

Special Edition for 75th Plenary Meeting of ICAC

31- WORLD COTTON STATISTICS

YEARS	Area	Production	Yield
	(' 000' hectares)	(' 000' M.tons)	(kgs./ ha.)
1	2	3	4
2008-09	30,458	23,455	770
2009-10	30,052	22,030	733
2010-11	33,359	25,101	752
2011-12	36,059	27,810	771
2012-13	34,130	26,660	781
2013-14	32,685	26,287	804
2014-15	33,899	26,118	770
2015-16*	30,535	21,259	896

Sources:- Cotton This Month August,2016

*Estimates.

32-WORLD COTTON DISTRIBUTION

YEARS	Exports	Imports	End Season Stock	Consumption
1	2	3	4	5

(' 000' Metric. tons)

2008-09	6,593	6,506	11,900	23,690
2009-10	7,772	7,768	8,519	25,239
2010-11	77,647	7,698	9,302	24,495
2011-12	9,834	9,802	15,270	22,100
2012-13	10,167	9,662	17,098	23,584
2013-14	8,999	8,646	20,303	23,611
2014-15	7,722	7,579	22,323	24,178
2015-16*	7,315	7,249	19,666	23,850

Sources:- Cotton This Month August,2016

*Estimates.

Special Edition for 75th Plenary Meeting of ICAC

33- PAKISTAN'S PLACE IN WORLD COTTON PRODUCTION (Million Tons)

YEARS	Cotton Production		Pakistan's share (%)
	World	**Pakistan	
2005-06	25.70	2.21	8.60
2006-07	26.83	2.18	8.12
2007-08	26.15	1.98	7.57
2008-09	23.62	2.01	8.51
2009-10	22.37	2.19	9.79
2010-11	25.45	1.95	7.66
2011-12	27.84	2.31	8.29
2012-13	26.70	2.22	8.23
2013-14	26.29	2.17	7.87
2014-15	26.12	2.37	8.84
2015-16*	21.26	1.68	7.10

Sources:- Cotton This Month August,2016

**Pakistan Central Cotton Committee.

34- PAKISTAN'S PLACE IN WORLD COTTON CONSUMPTION (Million Tons)

YEARS	Cotton Consumption		Pakistan's share (%)
	World	**Pakistan	
2005-06	24.92	2.53	10.16
2006-07	26.47	2.65	10.00
2007-08	26.54	2.66	10.00
2008-09	23.69	2.61	11.02
2009-10	25.24	2.40	9.50
2010-11	24.49	2.44	9.96
2011-12	22.78	2.41	10.14
2012-13	23.52	2.42	10.24
2013-14	23.73	2.03	8.76
2014-15	24.18	2.50	10.38
2015-16*	23.85	2.19	9.18

Sources:- Cotton This Month August,2016

**Pakistan Central Cotton Committee.

35- PAKISTAN'S PLACE IN WORLD COTTON YIELD (Kg/Ha)

YEARS	Cotton Yield	
	World	**Pakistan
2007-08	795	649
2008-09	771	713
2009-10	742	713
2010-11	761	724
2011-12	770	815
2012-13	776	769
2013-14	804	774
2014-15	770	802
2015-16*	696	581

Source:- Cotton World Statistics.

**Pakistan Central Cotton Committee.

Special Edition for 75th Plenary Meeting of ICAC

36- COTLOOK INDICES AT LIVERPOOL

PERIOD	INDEX 'A'	INDEX 'B'
		(US cents per pound CIF)
2011-12		
August	114.29	NQ
September	116.70	NQ
October	110.66	NQ
November	104.35	NQ
December	95.75	NQ
January	101.05	NQ
February	100.72	NQ
March	89.76	NQ
April	100.00	NQ
May	89.05	NQ
June	82.12	NQ
July	83.86	NQ
Seasonal Average	99.03	NQ
2012-13		
August	84.21	NQ
September	84.15	NQ
October	81.87	NQ
November	80.80	NQ
December	83.41	NQ
January	85.47	NQ
February	89.76	NQ
March	94.58	NQ
April	92.82	NQ
May	92.72	NQ
June	92.52	NQ
July	87.91	NQ
Seasonal Average	87.52	NQ
2013-14		
August	92.27	NQ
September	90.05	NQ
October	89.34	NQ
November	84.69	NQ
December	87.39	NQ
January	91.21	NQ
February	94.05	NQ
March	96.88	NQ
April	94.26	NQ
May	92.52	NQ
June	90.93	NQ
July	90.63	NQ
Seasonal Average	91.19	NQ
2014-15		
August	74.08	NQ
September	73.64	NQ
October	70.33	NQ
November	67.43	NQ
December	68.56	NQ
January	67.49	NQ
February	69.89	NQ
March	70.06	NQ
April	71.54	NQ
May	72.91	NQ
June	72.30	NQ
July	72.63	NQ
Seasonal Average	70.91	NQ
2015-16		
August	71.79	NQ
September	68.95	NQ
October	68.93	NQ
November	69.21	NQ
December	70.52	NQ
January	68.81	NQ
February	66.55	NQ
March	65.33	NQ
April	69.17	NQ
May	70.27	NQ
June	74.01	NQ
July	80.72	NQ
Seasonal Average	70.36	NQ

Source:- Cotton Outlook.

Special Edition for 75th Plenary Meeting of ICAC

37- Top Five Cotton Producing Countries & their % share in World Cotton Production. During 2014-15 & 2015-16

Countries	2014-15		2015-16	
	Production	%Share	Production	%Share
	Million M/tons	World Total	Million M/tons	World Total
1	2	3	4	5
India	6.46	24.74	5.75	27.05
China	6.50	24.89	4.82	22.67
USA	3.55	13.59	2.81	13.22
Pakistan	2.31	8.85	1.51	7.10
Brazil	1.56	5.97	1.39	6.54
Others	5.73	21.94	4.98	23.42
Total	26.11		21.26	

Source:- Cotton Outlook August,2016 * Estimated

38- NEW YORK COTTON FUTURES (2014-15& 2015-16)

(Cents per pound)

Month/Season	Nearby Contracts		
	2014-15	2015-16	%change over 2014-15
August	66.5	65.0	-2.3
September	66.5	61.7	-7.2
October	63.6	62.5	-1.7
November	61.1	61.3	0.4
December	60.9	63.7	4.6
January	59.4	61.5	3.5
February	63.2	59.5	-5.8
March	62.4	57.4	-8.0
April	64.8	61.5	-5.1
May	65.1	62.1	-4.6
June	64.4	64.0	-0.6
July	65.7	70.5	7.3
Average	63.6	62.6	-1.4

Source:- Cotton Outlook.

WEIGHTS AND MEASURES

Kilogram	=	2.2046 Pounds = 1.0717 Seers
Pounds	=	453.5924 Grams = 0.4536 Kilogram
Maund	=	82.2858 Pounds = 37.3242 Kilograms = 0.0373 Metric Ton.
Metric Ton	=	2204.6229 Pounds= 26.7923 Maunds = 1000 Kilograms
Kantar	=	50 Kilograms = 110.2334 Pounds = 1.3396 Maunds.
Quintal	=	1.9684 Cwt. = 2.6792 Maunds = 100 Kilograms
Hundred weight (CWT)	=	112 Pounds = 50.8029 Kilograms
Yard	=	0.9144 Metre
Square Yard	=	0.8361 Square Metre.
Metre	=	3.2808 Feet = 1.0936 Yards
Square Metre	=	1.19603 Square Yards.
Acre	=	4840 Square Yards = 0.4047 Hectare = 4046.7240 Sq. Metre.
Hectare	=	2.4710 Acre = 11959.6400 Sq. Yards = 999.4550 Sq. Metre.
Bale of Raw Cotton	=	375 Pounds = 170 Kilograms = 0.170 Metric Ton.
Bale of Cotton Yarn	=	400 Pounds=181.4388 Kilograms=0.1814388 Metric ton.
Bale of Cotton Cloth	=	1500 Sq. Yards = 1254.1500 Sq. Metres.
Lbs/Acre.	=	0.8922 X (Kgs. /Hectare).
Kgs/Hectare	=	1.1208 X (Lbs/Acre) = 92.2281 X (Mds. /acre).
Maund/Acre	=	0.01084268 X (Kgs. /Hectare).



Directorate of Marketing & Economic Research
Pakistan Central Cotton Committee, Old Shuja Abad Road, Multan Pakistan.